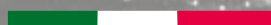


## MULTITASKING & COMPACT GRIP MORSE Autocentranti - Self-centering VISES



MADE IN ITALY





# VALIGETTA DI CAMPIONATURA ZERO POINT & MULTITASKING SAMPLE KIT CASE STD ZERO POINT & MULTITASKING

**NEW!**



**Art. 982**

Valigetta di campionatura morsa Art.640 - Art.665 - Art.81P  
Sample kit case Art.640- Art.665 - Art.81P

Cod. 0.98.20000

All'Interno - Inside:					
	Art.10A		Art.645T		Art.655J
	Art.11A		Art.645B		Art.370
	Art.645C		Art.655B		Art.375
	Art.645D		Art.655C		Art.376
	Art.645E		Art.655D		Art.377
	Art.645F		Art.655F		Art.297
					Art.298



## SIMBOLOGIA DATI TECNICI TECHNICAL DATA ICONS

SERIE SERIES					
			Morse Multitasking Multitasking vises	Morse Compact Grip Compact Grip vises	Sistema a coda di rondine Dove Tail fixtures
INSERTI GRIP INSERT GRIP					
			Liscio + Ruvido Smooth + Rough	Coda di Rondine Dove Tail	GRIP GRIP
POSSIBILITÀ DI POSSIBILITY OF					
				Lavorazioni a 5 assi 5 axis machining	Predisposizione Zero Point Zero Point Ready
PAGINE PAGES					
	Rialzi Risers	Sistema Idraulico Hydraulic system	Accessori & Ricambi Accessories & Spare Parts	Istruzioni corretto utilizzo Instruction for a proper use	Diagrammi forze di serraggio Clamping force diagrams

# MORSE serie MULTITASKING

## MULTITASKING series VISES

**Morse per applicazioni avanzate su centri di lavoro a 5 assi, Autocentranti e / o eccentriche**  
**Vises for advanced applications on 5 axis machining centres, Self-centering and / or eccentric**

Di speciale interesse per gli utilizzatori di centri di lavoro a 5 assi, le morse MULTITASKING presentano le stesse caratteristiche costruttive illustrate per le morse della serie FMS e MULTIFLEX (accuratamente rettificate in acciaio ad alta resistenza cementato trattato termicamente).

Nata espressamente per i centri a 5 assi, la gamma MULTITASKING permette di intervenire sulle 5 facce del particolare in lavorazione con riferimenti precisi in spazi contenuti garantendo usure inesistenti e grande rigidità. Possibilità di ausilio di sistemi meccanici o idraulici o pneumatici. Ganasce da 74 a 140 mm.

**Ancoraggio diretto o tramite staffe / Posizionamento tramite fori calibrati o chiavette / Eccentriche: possibilità di disassamento centraggio per multipli di 1 mm (Auto-centraccio fuori asse) / Autocentranti con serraggi concentrici dall'esterno all'interno e viceversa / Minimi ingombri e massima rigidità / Costruzione solida e compatta a massima apertura rispetto agli ingombri / Disponibili serie di ganasce intercambiabili / Ganasce integrali per massima rigidità**

*Of special interest to 5 axis centres users MULTITASKING vises present the same building characteristics of FMS and MULTIFLEX vises, (Heat treatment and ground steel construction throughout).*

**Designed for 5 axis machines, MULTITASKING series of vises allow machining operations on the 5 workpieces sides with perfect alignment in a space saving design, extremely high wear resistance, with reduced deflection. Possibility of mechanic or hydraulic or pneumatic devices application. Jaws widths from 75 to 140 mm.**

**Direct vise set-up or through vise clamps / Positioning through ground holes or keyways / Self-centering with possibility to clamping from outside to inside and viceversa / Eccentric jaw adjustment in steps of 1 mm (Multiaxis self-centering) / Minimum deflection and overall dimensions / Solid and rigid construction and maximum clamping ratio to the total length / Series of interchangeable jaws available / Solid jaws (integral with the slides) for highest rigidity**

### Art.640 *MULTITASKING vise*

Azionamento manuale - Serraggio meccanico  
 Manual Control - Mechanical Clamping



**MILLERIGHE (passo 2mm)**  
 Sistema di riposizionamento ganasce  
**MULTIROWS (pitch 2mm)**  
 Jaws repositioning system

#### CARATTERISTICHE E VANTAGGI

- USURA INESISTENTE
- RAPIDITÀ DEI SERRAGGI
- MODULARITÀ & VERSATILITÀ
- PRECISIONI  $\pm 0,02\text{mm}$
- RIGIDITÀ & SICUREZZA
- DESIGN COMPATTO E MANEGGEVOLEZZA
- AUTOCENTRANTI
- PREDISPOSIZIONE PER ZERO POINT
- UTILIZZO DISTANZIALI

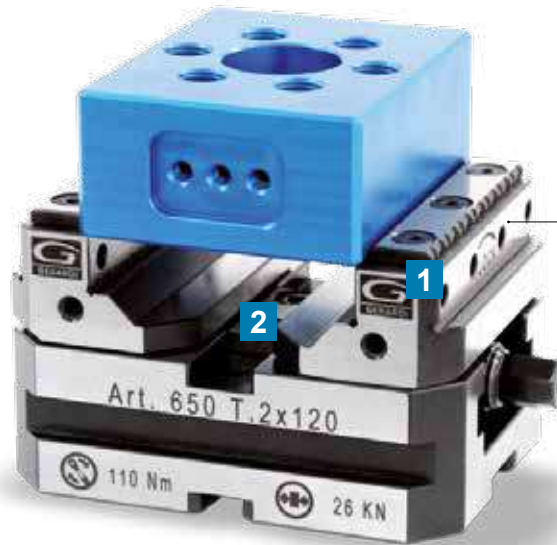
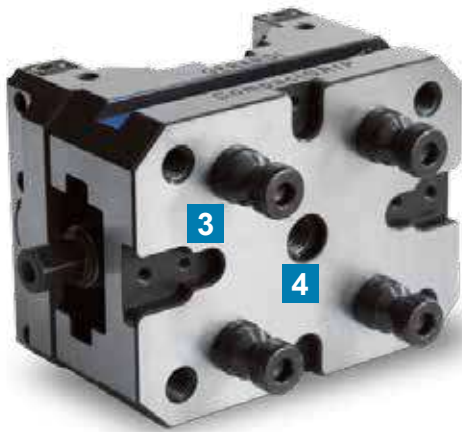
#### TECHNICAL FEATURES and ADVANTAGES

- NO WEAR
- QUICK CLAMPING
- MODULARITY & VERSATILITY
- HIGHEST ACCURACY  $\pm 0,02\text{mm}$
- RIGIDITY & SAFETY
- SPACE SAVING DESIGN & HANDY
- SELF-CENTERING
- ZERO POINT READY
- COMPATIBLE RISERS

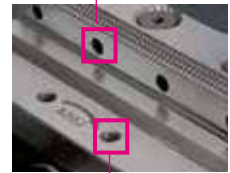
# MORSE serie COMPACT GRIP COMPACT GRIP series VISES

Morse autocentranti con ganasce integrali reversibili, ideali per centri a 5 assi  
Self-centering vise with reversible solid jaws, ideal for five axis machine centres

**NEW!**



Fori passanti per montaggio piastre ganasce personalizzate.  
Through holes for mounting tailor made jaw plates



Fori filettati per il fissaggio di distanziali personalizzati  
Thread holes for mounting tailor made risers

Inseri riportati utilizzabili da entrambi i lati.



Inserts to be used on both sides

**Art.650**

**COMPACT GRIP series**

Azionamento manuale - Serraggio meccanico  
Manual Control - Mechanical Clamping



## 1 VERSATILITÀ

Grande versatilità ottenuta attraverso la possibilità di sostituire gli Inserti GRIP con diversi tipi di dentatura in modo facile e veloce (da utilizzare a seconda del materiale da lavorare). Versatilità grazie alle ganasce reversibili e alle 4 opzioni di posizionamento della base (90°) ed ai fori frontali passanti.

## 1 VERSATILITY

Another advantage will be the greatest versatility thanks to easiest and quickest GRIP top jaw inserts exchange with different types of teeth design to be used according the material to be clamped. Versatility also thanks to the reversible jaws and to the 4 base positions option (90°) and to the front through holes.



## 2 GRANDE FORZA di SERRAGGIO

Forza di serraggio maggiore rispetto alle morse oggi sul mercato, ma anche rispetto alle nostre morse Art.640 e con un design più compatto e leggero. Questo è possibile grazie alle viti di serraggio, alla loro posizione più prossima al particolare da lavorare e al design integrale di slitte e ganasce. Veloce sistema di regolazione autocentrante dall'alto tramite tasselli di azzeramento forniti in dotazione

## 2 HIGHEST CLAMPING POWER

Much higher clamping power than the existing vises, but also compared to our Art.640 and with a more compact and lighter design. This is because of the clamping screw design, its position much closer to the workpiece, and the integral design of slides and jaws. Easy self-centering adjustment from the top by key-nuts supplied as standard equipment.



## 3 COMPATIBILITÀ

Le basi delle morse Compact Grip offrono la massima compatibilità con i sistemi di cambio pallet già esistenti sul mercato

## 3 COMPATIBILITY

Compact grip vise bases are compatible with the most popular pallet change systems.



## 4 PREDISPOSIZIONE ZERO POINT

Compatibilità con i sistemi di cambio pallet già esistenti sul mercato, ma anche con il nostro sistema Zero Point Tipo 1 e Tipo 2 ed il sistema di cambio rapido meccanico

## 4 ZERO POINT READY

Compatibility with the most popular pallet change systems, but also with our Zero Point Type 1 and Type 2 and with the mechanical quick change system.



## RIALZI

Compatibili con le morse Multitasking e Compact Grip permettono di lavorare parti del particolare difficili da raggiungere.

## RISERS

Compatible with Multitasking and Compact Grip vises they allow to machine those areas usually hard to reach.

Tipo (grandezza) morsa / Vise (type) size

**Art. 640**

 Tipo / Type **1 e 2**

 Morsa autocentrante o eccentrica.  
 Azionamento manuale  
 Serraggio meccanico

 Self-centering or eccentric vise.  
 Manual operation Mechanical clamping

kN	1 16 kN	2 20 kN
A	65	95
A1	20	40
W	74	99
B	15	20
C	50	70
D	Ø120	Ø160
E	35	35
F	92	120
G	20	25
H	156	208
L	M12	M16
M	9	11
kg	4,9	11
Cod.	6.64.01000	6.64.02000

**AMPLIA LE TUE APPLICAZIONI TRAMITE GLI ACCESSORI MODULARI !**
**Art. 641H**

 Tipo / Type **1 e 2**

 Rialzo Semplice  
 Simple Riser


Cod.	7.64.1H100	7.64.1H200
------	------------	------------

Vedi gamma completa - See the complete range Page 7.14 / 7.15

**Art. 645B**

 Ganascia dolce  
 Soft jaw


Cod.	6.64.5B100	6.64.5B200
------	------------	------------

**Art. 645C**

 Ganascia liscia  
 Smooth jaw

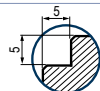

Cod.	6.64.5C100	6.64.5C200
------	------------	------------

**Art. 645D**

 Ganascia zigrinata  
 Serrated jaw


Cod.	6.64.5D100	6.64.5D200
------	------------	------------

**Art. 645E**

 Ganascia a gradino  
 Step jaw


Cod.	6.64.5E100	6.64.5E200
------	------------	------------

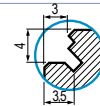
In Dotazione - Standard Equipment

**Art. 645F**

 Ganascia prismatica  
 Prismatic jaw


Cod.	6.64.5F100	6.64.5F200
------	------------	------------

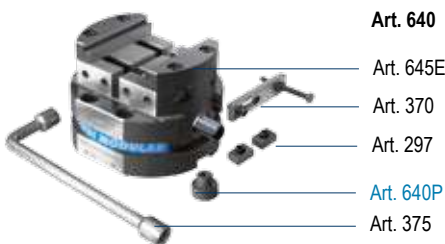
**Art. 645T**

 Ganascia GRIP  
 GRIP jaw


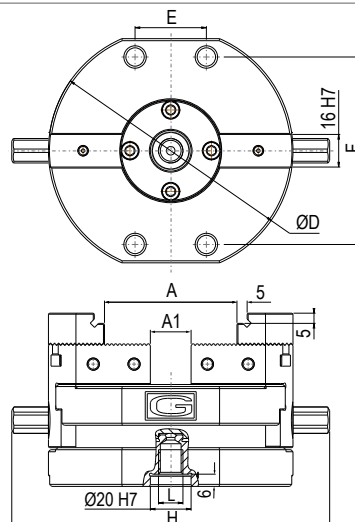
Cod.	6.64.5T100	6.64.5T200
------	------------	------------

**Dotazione standard:**

- 1 chiave esagonale Art. 375 ■ 1 arresto laterale Art. 370
- 1 coppia di tasselli di posizionamento Art. 297
- 1 perno calibrato per centraggio Art. 640P  
 (Indicare dimensione in fase d'ordine)

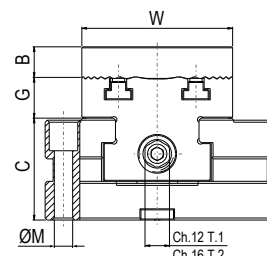

**Standard equipment:**

- 1 exagonal wrench Art. 375 ■ 1 workstop Art. 370
- 1 pair of positioning key-nuts Art. 297
- 1 calibrated centering pin Art. 640P (Dimension to be advised at order)


**Art. 640**

 Tipo / Type **1 e 2**

 Esempio di ordine: Art. 640 tipo 1  
 (Art.297 18mm + Art.640P 40mm)

 Example of order: Art. 640 type 1  
 (Art.297 18mm + Art.640P 40mm)


**Art. 640** Tipo / Type **3 x 166**

Morsa autocentrante o eccentrica.  
Azionamento manuale.  
Serraggio meccanico

Tipo (grandezza) morsa / Vise (type) size		3	
		kN	30 kN
A		108	
A1		20	
W		138	
B		30	
C		58	
D		166	
E		-	
kg		13	
Cod.		7.64.03166	

Self-centering or eccentric vise.  
Manual operation Mechanical clamping

**Art. 640** Tipo / Type **3 x 266**

Morsa autocentrante o eccentrica.  
Azionamento manuale.  
Serraggio meccanico

Tipo (grandezza) morsa / Vise (type) size		3	
		kN	30 kN
A		208	
A1		60	
W		138	
B		30	
C		58	
D		266	
E		200	
kg		20	
Cod.		7.64.03266	

Self-centering or eccentric vise.  
Manual operation Mechanical clamping

**UPGRADE YOUR VISE APPLICATIONS THROUGH MODULAR ACCESSORIES !**

**Art. 641H** Tipo / Type **3 x 166**

Rialzo Semplice  
Simple Riser

Cod.	7.64.1H3166
------	-------------

**Art. 641H** Tipo / Type **3 x 266**

Rialzo Semplice  
Simple Riser

Cod.	7.64.1H3266
------	-------------

Vedi gamma completa - See the complete range Page 7.14 / 7.15

**Art. 645B** Ganascia dolce  
Soft jaw

Cod.	7.64.5B300
------	------------

**Art. 645C** Ganascia liscia  
Smooth jaw

Cod.	7.64.5C300
------	------------

**Art. 645D** Ganascia zigrinata  
Serrated jaw

Cod.	7.64.5D300
------	------------

**Art. 645E** Ganascia a gradino  
Step jaw

In Dotazione - Standard Equipment

Cod.	7.64.5E300
------	------------

**Art. 645F** Ganascia prismatica  
Prismatic jaw

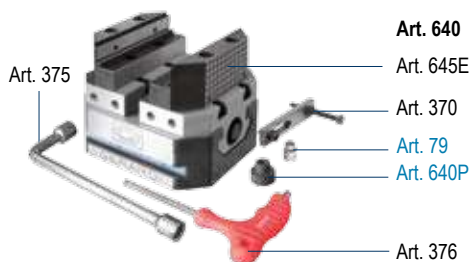
Cod.	7.64.5F300
------	------------

**Art. 645T** Ganascia GRIP  
GRIP jaw

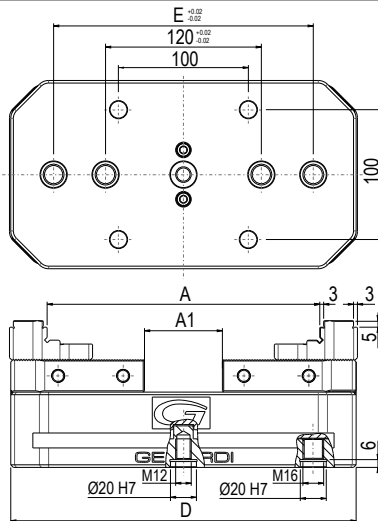
Cod.	7.64.5T300
------	------------

**Dotazione standard:**

- 1 chiave a pipa Art. 375 ■ 1 chiave a "T" Art. 376
- 1 arresto laterale Art. 370 ■ 1 perno calibrato per centraggio e orientamento Art. 79 ■ 1 perno calibrato per centraggio Art. 640P (Indicare dimensione in fase d'ordine)

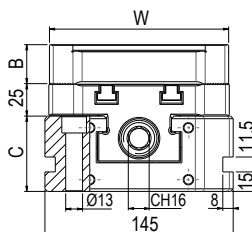

**Standard equipment:**

- 1 box wrench Art. 375 ■ 1 "T" wrench Art. 376
- 1 workstop Art. 370 ■ 1 calibrated centering and orientation pin Art. 79
- 1 calibrated centering pin Art. 640P (Dimension to be advised at order)

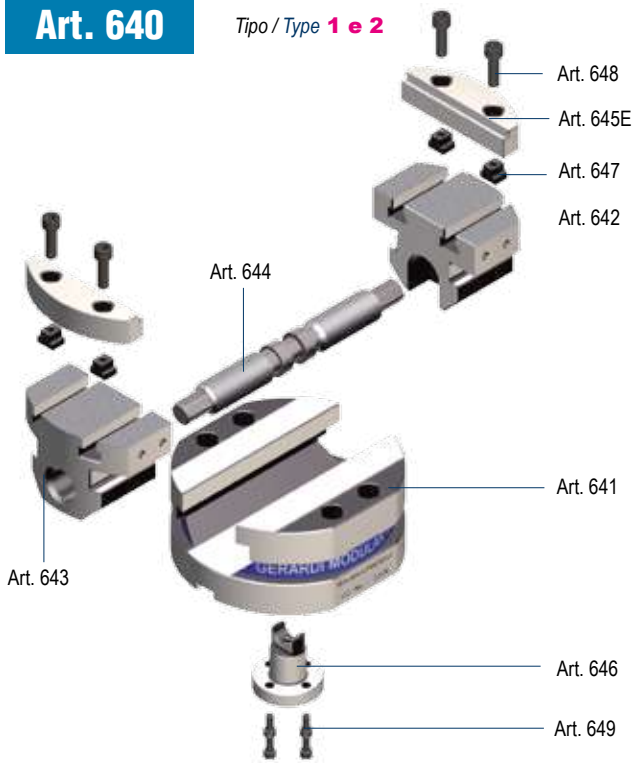

**Art. 640** Tipo / Type **3**

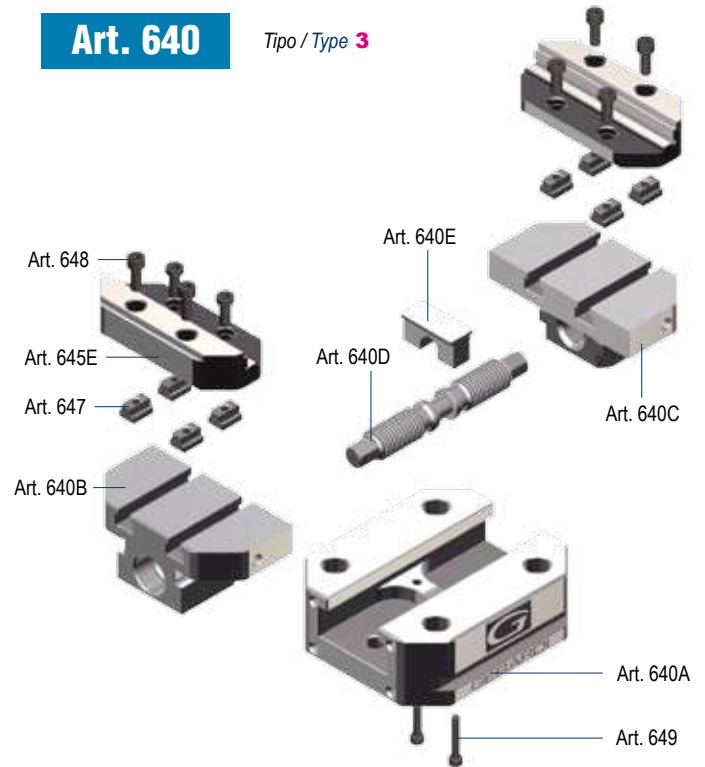
 Esempio di ordine: Art. 640 tipo 3 x 166  
(Art.79 16mm + Art.640P 40mm)

 Example of order: Art. 640 type 3 x 166  
(Art.79 16mm + Art.640P 40mm)

 USARE STAFFE - USE SIDE CLAMPS  
 Art.298 Tipo / Type **1xM10 / 1xM12 / 1xM16**


**Art. 640**

 Tipo / Type **1 e 2**

**Art. 640**

 Tipo / Type **3**


Tipo / Type	1	2	Tipo / Type	3 x 166	3 x 266
<b>Art. 641</b> Corpo base Base body	Cod. 6.64.11000	6.64.12000	<b>Art. 640A</b> Corpo base Base body	Cod. 7.64.0A3166	7.64.0A3266
<b>Art. 642</b> Slitta integrale destra Solid slide right hand	Cod. 6.64.21000	6.64.22000	<b>Art. 640B</b> Slitta integrale sinistra Solid slide left hand	Cod. 7.64.0B3166	7.64.0B3266
<b>Art. 643</b> Slitta integrale sinistra Solid slide left hand	Cod. 6.64.31000	6.64.32000	<b>Art. 640C</b> Slitta integrale destra Solid slide right hand	Cod. 7.64.0C3166	7.64.0C3266
<b>Art. 644</b> Vite di bloccaggio Main screw	Cod. 6.64.41000	6.64.42000	<b>Art. 640D</b> Vite di bloccaggio Main screw	Cod. 7.64.0D3166	7.64.0D32664.43266
<b>Art. 645E</b> Ganascia a gradino Step jaw	Cod. 6.64.5E100	6.64.5E200	<b>Art. 640E</b> Forcella Yoke	Cod. 7.64.0E3166	7.64.0E3266
<b>Art. 646</b> Forcella Yoke	Cod. 6.64.61000	6.64.62000	<b>Art. 645E</b> Ganascia a gradino Step jaw	Cod. 7.64.5E300	
<b>Art. 647</b> Dado a T (Cad.) T nut (Each)	Cod. 6.64.71000	6.64.72000	<b>Art. 647</b> Dado a T (Cad.) T nut (Each)	Cod. 7.64.73000	
<b>Art. 648</b> Vite per ganascia Hex socketed head screw for jaw	Cod. 6.64.81000	6.64.82000	<b>Art. 648</b> Vite per ganascia Hex socketed head crew for jaw	Cod. 7.64.83000	
<b>Art. 649</b> Vite per forcella Hex socketed head screw for yoke	Cod. 6.64.91000	6.64.92000	<b>Art. 649</b> Vite per forcella Hex socketed head crew for yoke	Cod. 7.64.93000	



# GANASCE PER MORSE MULTITASKING Art.640

## JAWS FOR MULTITASKING VISES Art.640

Tipo (grandezza) / Type (size)		1	2	3															
	B	15	20	30															
	Y	27,5	32,5	50															
	W	74	99	138															
<b>Art. 645B</b> Ganascia dolce Soft jaw			<table border="1"> <tr><td>K</td><td>20</td><td>30</td></tr> <tr><td>X</td><td>27,5</td><td>42,5</td></tr> <tr><td>Cod.</td><td>6.64.5B100</td><td>6.64.5B200</td></tr> </table>	K	20	30	X	27,5	42,5	Cod.	6.64.5B100	6.64.5B200	<table border="1"> <tr><td></td><td>50</td></tr> <tr><td></td><td>64</td></tr> <tr><td></td><td>7.64.5B300</td></tr> </table>		50		64		7.64.5B300
K	20	30																	
X	27,5	42,5																	
Cod.	6.64.5B100	6.64.5B200																	
	50																		
	64																		
	7.64.5B300																		
<b>Art. 645C</b> Ganascia liscia Smooth jaw			<table border="1"> <tr><td>Cod.</td><td>6.64.5C100</td><td>6.64.5C200</td></tr> </table>	Cod.	6.64.5C100	6.64.5C200	<table border="1"> <tr><td></td><td>7.64.5C300</td></tr> </table>		7.64.5C300										
Cod.	6.64.5C100	6.64.5C200																	
	7.64.5C300																		
<b>Art. 645D</b> Ganascia zigrinata Serrated jaw			<table border="1"> <tr><td>Cod.</td><td>6.64.5D100</td><td>6.64.5D200</td></tr> </table>	Cod.	6.64.5D100	6.64.5D200	<table border="1"> <tr><td></td><td>7.64.5D300</td></tr> </table>		7.64.5D300										
Cod.	6.64.5D100	6.64.5D200																	
	7.64.5D300																		
<b>Art. 645E</b> Ganascia a gradino Step jaw			<table border="1"> <tr><td>Cod.</td><td>6.64.5E100</td><td>6.64.5E200</td></tr> </table>	Cod.	6.64.5E100	6.64.5E200	<table border="1"> <tr><td></td><td>7.64.5E300</td></tr> </table>		7.64.5E300										
Cod.	6.64.5E100	6.64.5E200																	
	7.64.5E300																		
<b>Art. 645F</b> Ganascia prismatica Prismatic jaw			<table border="1"> <tr><td>ØA</td><td>7 ÷ 15</td><td>9 ÷ 20</td></tr> <tr><td>ØM</td><td>25 ÷ 70</td><td>35 ÷ 110</td></tr> <tr><td>Cod.</td><td>6.64.5F100</td><td>6.64.5F200</td></tr> </table>	ØA	7 ÷ 15	9 ÷ 20	ØM	25 ÷ 70	35 ÷ 110	Cod.	6.64.5F100	6.64.5F200	<table border="1"> <tr><td></td><td>12 ÷ 30</td></tr> <tr><td></td><td>50 ÷ 160</td></tr> <tr><td></td><td>7.64.5F300</td></tr> </table>		12 ÷ 30		50 ÷ 160		7.64.5F300
ØA	7 ÷ 15	9 ÷ 20																	
ØM	25 ÷ 70	35 ÷ 110																	
Cod.	6.64.5F100	6.64.5F200																	
	12 ÷ 30																		
	50 ÷ 160																		
	7.64.5F300																		
<b>Art. 645T</b> Ganascia GRIP Jaw			<table border="1"> <tr><td>Cod.</td><td>6.64.5T100</td><td>6.64.5T200</td></tr> </table>	Cod.	6.64.5T100	6.64.5T200	<table border="1"> <tr><td></td><td>50</td></tr> <tr><td></td><td>132</td></tr> <tr><td></td><td>7.64.5T300</td></tr> </table>		50		132		7.64.5T300						
Cod.	6.64.5T100	6.64.5T200																	
	50																		
	132																		
	7.64.5T300																		

Tipo (grandezza) / Type (size)		1	2	3																
<b>Art. 79</b> Perno calibrato per centraggio e orientamento Calibrated centering and orientation pin			<table border="1"> <tr><td>ØC h7</td><td>-</td><td>-</td><td>20</td></tr> <tr><td>M</td><td>-</td><td>-</td><td>16</td></tr> <tr><td>ØB</td><td>-</td><td>-</td><td>10-12-14-16-18-20</td></tr> <tr><td>Cod.</td><td>-</td><td>-</td><td>7.79.20M16/ØB</td></tr> </table>	ØC h7	-	-	20	M	-	-	16	ØB	-	-	10-12-14-16-18-20	Cod.	-	-	7.79.20M16/ØB	
ØC h7	-	-	20																	
M	-	-	16																	
ØB	-	-	10-12-14-16-18-20																	
Cod.	-	-	7.79.20M16/ØB																	
<b>Art. 297</b> Coppia di tasselli di posizionamento completi di vite M5 x 10 Pair of positioning key-nuts with M5 x 10 clamping screw			<table border="1"> <tr><td>ØB</td><td>10 - 12 - 14 - 16 - 18 - 20 - 22 - 24 - 28 - 36</td><td>-</td></tr> <tr><td>Cod.</td><td>2.29.71000</td><td>-</td></tr> </table>	ØB	10 - 12 - 14 - 16 - 18 - 20 - 22 - 24 - 28 - 36	-	Cod.	2.29.71000	-											
ØB	10 - 12 - 14 - 16 - 18 - 20 - 22 - 24 - 28 - 36	-																		
Cod.	2.29.71000	-																		
<b>Art. 640P</b> Perno calibrato per centraggio Calibrated centering pin			<table border="1"> <tr><td>ØB</td><td>* Specificare</td><td>* Specify always</td></tr> <tr><td>Cod.</td><td>7.64.0P1000</td><td>7.64.0P2000</td></tr> </table>	ØB	* Specificare	* Specify always	Cod.	7.64.0P1000	7.64.0P2000											
ØB	* Specificare	* Specify always																		
Cod.	7.64.0P1000	7.64.0P2000																		

\* Specificare sempre quota ØB - Specify always ØB dimension

Tipo (grandezza) morsa / Vise (type) size		1	2
	kN	20 kN	26 kN
<b>Art. 640J</b>	Ø A	30 ÷ 45	45 ÷ 70
	W	74	99
	B	60	80
	C	50	70
	D	Ø120	Ø160
	E	35	35
	F	92	120
	G	30	40
	H	156	208
	L	M12	M16
	M	Ø9	Ø11
	kg	5	10
	Cod.	7.64.0J100	7.64.0J200

**Art. 640J**

 Tipo / Type **1 e 2**

 Morsa autocentrante.  
 Azionamento manuale  
 Serraggio meccanico

 Self-centering vise.  
 Manual operation Mechanical clamping

**AMPLIA LE TUE APPLICAZIONI TRAMITE GLI ACCESSORI MODULARI !**

<b>Art. 641H</b>	Rialzo Semplice Simple Riser		Cod.	7.64.1H100	7.64.1H200
<b>Art. 655B</b>	Piastra ganascia dolce Soft jaw-plate		Cod.	7.65.5B100	7.65.5B200
<b>Art. 655C</b>	Piastra ganascia liscia Smooth jaw-plate		Cod.	7.65.5C100	7.65.5C200
<b>Art. 655D</b>	Piastra ganascia zigrinata Serrated jaw-plate		Cod.	7.65.5D100	7.65.5D200
<b>Art. 655F</b>	Piastra ganascia prismatica Prismatic jaw-plate		Ø	10 ÷ 18	10 ÷ 30
			Cod.	7.65.5F118	7.65.5F230
			Ø	15 ÷ 23 * 23 ÷ 30	25 ÷ 45
			Cod.	7.65.5F123	7.65.5F245
<b>Art. 655J</b>	Coppia di ganasce integrali prismatiche Prismatic solid jaws (1 pair)			30 ÷ 45	45 ÷ 70
			Cod.	7.65.5J100	7.65.5J200

Vedi gamma completa - See the complete range Page 7.14 / 7.15

 \* Per Ø 23+30 ingombro max. (D1) = 132mm Ø (anziché 120mm)  
 For Ø 23+30 max overall dimensin (D1) Ø132mm (instead of 120mm)

**Dotazione standard:**

- 1 chiave esagonale Art. 375 ■ 1 arresto laterale Art. 370
- 2 coppie di piastre Art. 655F (Tot. 4 pezzi) ■ 1 coppia di piastre dolci Art. 655B
- 1 coppia di tasselli di posizionamento Art. 297
- 1 perno calibrato per centraggio Art. 640P (Indicare dimensione in fase di ordine)

Art. 655J


**Art. 640J**

Art. 297

Art. 640P

Art. 655F (Ø min)

Art. 655F (Ø max)

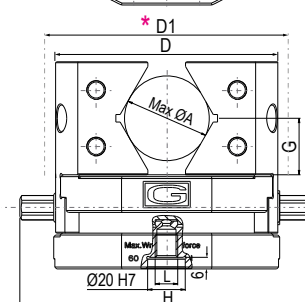
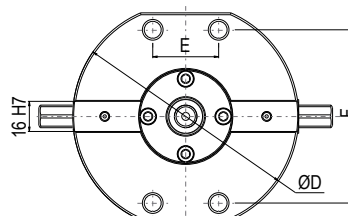
Art. 655B

Art. 375

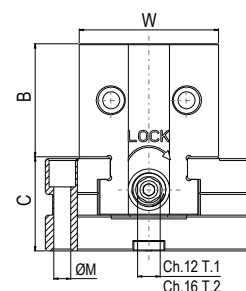
Art. 370

**Standard equipment:**

- 1 esagonal wrench Art. 375 ■ 1 workstop Art. 370
- 2 pair of plates Art. 655F (Tot. 4 pcs) ■ 1 pair soft jaw plates Art. 655B
- 1 pair of positioning key-nuts Art. 297 ■ 1 calibrated centering pin Art. 640P (Indicare dimensione in fase di ordine)


**Art. 640J** Tipo / Type **1 e 2**

 Esempio di ordine: Art. 640J tipo 2  
 (Art.297 16mm + Art.640P 30mm)

 Example of order: Art. 640J type 2  
 (Art.297 16mm + Art.640P 30mm)


Tipo (grandezza) morsa / Vise (type) size

	3
	30 kN
Ø A	44 ÷ 68
A1	-
W	78
B	75
C	58
D	166
E	-
G	45
kg	15
Cod.	7.64.0J310

**Art. 640J** Tipo / Type **3 x 166**

Morsa autocentrante. Azionamento manuale. Serraggio meccanico

Self-centering vise. Manual operation Mechanical clamping

Tipo (grandezza) morsa / Vise (type) size

	3
	30 kN
Ø A	48 ÷ 102
A1	66
W	78
B	95
C	58
D	266
E	200
G	55
kg	22
Cod.	7.64.0J320

**Art. 640J** Tipo / Type **3 x 266**

Morsa autocentrante. Azionamento manuale. Serraggio meccanico

Self-centering vise. Manual operation Mechanical clamping

**UPGRADE YOUR VISE APPLICATIONS THROUGH MODULAR ACCESSORIES !**

**Art. 641H**

Tipo / Type **3 x 166**

Rialzo Semplice Simple Riser

Cod. 7.64.1H3166

**Art. 641H**

Tipo / Type **3 x 266**

Rialzo Semplice Simple Riser

Cod. 7.64.1H3266

Vedi gamma completa - See the complete range Page 7.14 / 7.15

**Art. 655B**

Piastra ganascia dolce Soft jaw-plate

Cod. 7.65.5B316

**Art. 655C**

Piastra ganascia liscia Smooth jaw-plate

Cod. 7.65.5C316

**Art. 655D**

Piastra ganascia zigrinata Serrated jaw-plate

Cod. 7.65.5D316

**Art. 655F**

Piastra ganascia prismatica Prismatic jaw-plate

Tipo / Type <b>3 x 166</b> Ø Min / Ø Max	12 ÷ 32	14 ÷ 34	16 ÷ 36	18 ÷ 45
Tipo / Type <b>3 x 266</b> Ø Min / Ø Max	12 ÷ 38	14 ÷ 48	16 ÷ 58	24 ÷ 65
Cod	7.65.5F330	7.65.5F335	7.65.5F345	7.65.5F350

**Art. 655J**

Coppia di ganasce integrali prismatiche Prismatic solid jaws (1 pair)

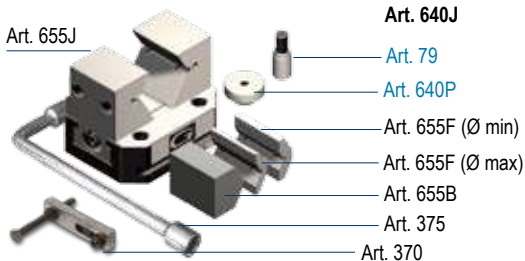
Ø	44 ÷ 68	48 ÷ 102
Cod.	7.65.5J316	7.65.5J326

Da usare in coppia To be used as a pair

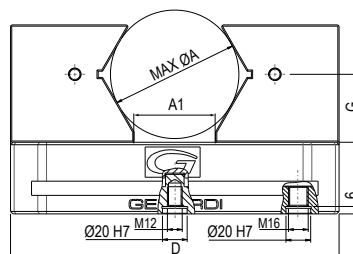
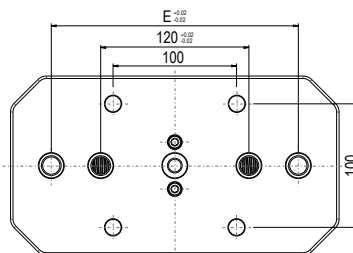
In Dotazione - Standard Equipment

**Dotazione standard:**

- 1 chiave a pipa Art. 375 ■ 1 arresto laterale Art. 370
- 2 coppie di piastre Art. 655F (Tot. 4 pezzi) ■ 1 coppia di piastre dolci Art. 655B
- 1 perno calibrato per centraggio e orientamento Art. 79
- 1 perno calibrato per centraggio Art. 640P (Indicare dimensione in fase di ordine)


**Standard equipment:**

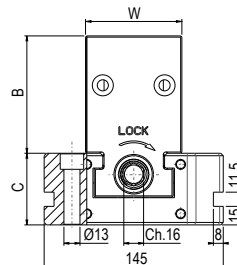
- 1 box wrench Art. 375 ■ 1 workshop Art. 370
- 2 pair of plates Art. 655F (Tot. 4 pcs) ■ 1 pair soft jaw plates Art. 655B
- 1 calibrated centering and orientation pin Art. 79
- 1 calibrated centering pin Art. 640P (Dimension to be advised at order)


**Art. 640J** Tipo / Type **3**

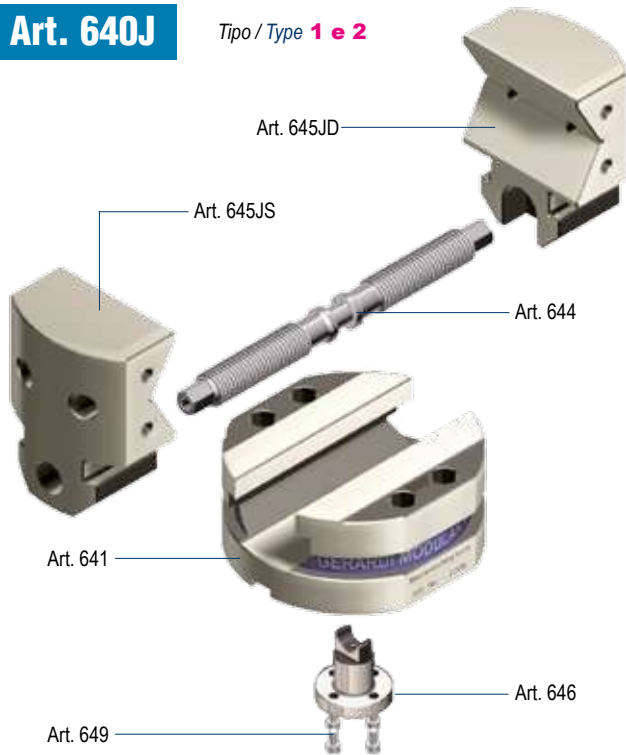
Esempio di ordine: Art. 640J tipo 3 x 266 (Art. 79 16mm + Art. 640P 30mm)

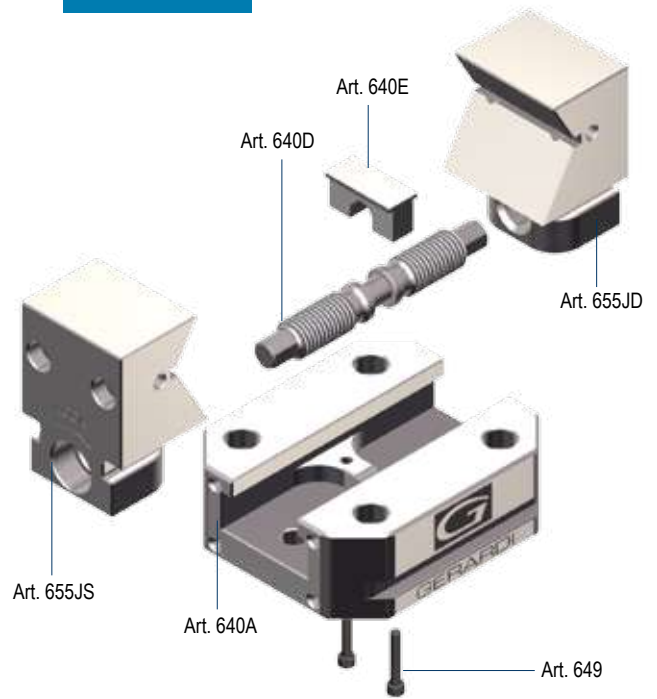
Example of order: Art. 640J type 3 x 266 (Art. 79 16mm + Art. 640P 30mm)

USARE STAFFE - USE SIDE CLAMPS  
Art. 298 Tipo / Type **1xM10 / 1xM12 / 1xM16**



**Art. 640J**

 Tipo / Type **1 e 2**

**Art. 640J**

 Tipo / Type **3**


Tipo / Type	1	2
-------------	---	---

<b>Art. 641</b>	Cod. 6.64.11000	6.64.21000
Corpo base Base body		

<b>Art. 644</b>	Cod. 6.64.41000	6.64.42000
Vite di bloccaggio Main screw		

<b>Art. 645JD</b> *	Cod. 7.64.5JD10	7.64.5JD20
Ganascia integrale prismatica dx Solid prismatic right jaw		

<b>Art. 645JS</b> *	Cod. 7.64.5JS20	7.64.5JS10
Ganascia integrale prismatica sx Solid prismatic left jaw		

<b>Art. 646</b>	Cod. 6.64.61000	6.64.462000
Forcella Yoke		

<b>Art. 649</b>	Cod. 6.64.91000	6.64.492000
Vite per forcella Hex socketed head crew for yoke		

Tipo / Type	3 x 166	3 x 266
-------------	---------	---------

<b>Art. 640A</b>	Cod. 7.64.0A3166	7.64.0A3266
Corpo base Base body		

<b>Art. 640D</b>	Cod. 7.64.0D3166	7.64.0D3266
Vite di bloccaggio Main screw		

<b>Art. 640E</b>	Cod. 7.64.0E3166	7.64.0E3266
Forcella Yoke		

<b>Art. 655JD</b> *	Cod. 7.65.5JD316	7.65.5JD326
Ganascia integrale prismatica dx Solid prismatic right jaw		

<b>Art. 655JS</b> *	Cod. 7.65.5JS316	7.65.5JS326
Ganascia integrale prismatica sx Solid prismatic left jaw		

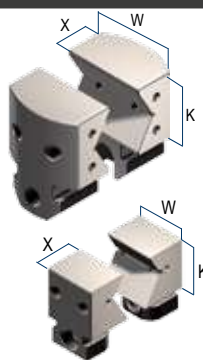
<b>Art. 649</b>	Cod. 7.64.93000	
Vite per forcella Hex socketed head crew for yoke		

\* **Art. 655JD** + **Art. 655JS** = **Art. 655J**

# GANASCE & PIASTRE GANASCE PER MORSE MULTITASKING Art.640J

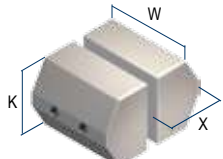
## JAWS & JAW PLATES FOR MULTITASKING VISES Art.640J

Tipo (grandezza) / Type (size)	1	2	3	
<b>Art. 655J</b> Tipo / Type <b>1-2</b> Coppia di ganasce integrali prismatiche Prismatic solid jaws (1 pair)	W 74	99	78	78
	K 60	80	75	95
	X 49	59	59	95
	Ø 30 ÷ 45	45 ÷ 70	44 ÷ 68	48 ÷ 102
	Cod. 7.65.5J100	7.65.5J200	7.65.5J316	7.65.5J326

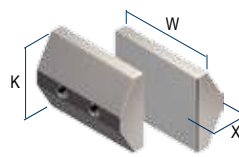


<b>Art. 655J</b> Tipo / Type <b>3</b> In Dotazione - Standard Equipment				
---	--	--	--	--

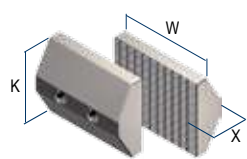
<b>Art. 655B</b> Piastra ganascia dolce Soft jaw-plate	K 55	70	60	
	X 38	54	49	
	Cod. 7.65.5B100	7.65.5B200	7.65.5B316	



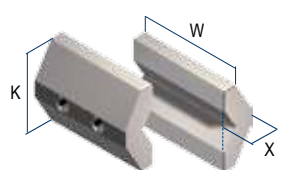
<b>Art. 655C</b> Piastra ganascia liscia Smooth jaw-plate	K 55	70	60	
	X 23	32	24	
	Cod. 7.65.5C100	7.65.5C200	7.65.5C316	



<b>Art. 655D</b> Piastra ganascia zigrinata Serrated jaw-plate	K 55	70	60	
	X 23	32	24	
	Cod. 7.65.5D100	7.65.5D200	7.65.5D316	

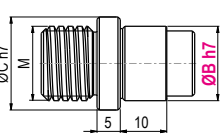


Tipo (grandezza) / Type (size)	1	2	3x166	3x266
<b>Art. 655F</b> Piastra ganascia prismatica Prismatic jaw-plate	K 43	54	60	60
	X 17	22	24	24
	Ø 10 ÷ 18	10 ÷ 30	12 ÷ 32	12 ÷ 38
	Cod. 7.65.5F118	7.65.5F230	7.65.5F330	
	Ø 15 ÷ 23 - 23 ÷ 30 *	25 ÷ 45	14 ÷ 34	12 ÷ 38
	Cod. 7.65.5F123	7.65.5F245	7.65.5F335	
	Ø -	-	16 ÷ 36	16 ÷ 58
	Cod. -	-	7.65.5F345	
	Ø -	-	18 ÷ 45	24 ÷ 65
	Cod. -	-	7.65.5F350	

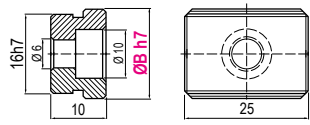


\* Per Ø 23=30 ingombro max. (D1) = 132mm Ø (anziché 120mm)  
 For Ø 23=30 max overall dimension (D1) Ø132mm (instead of 120mm)

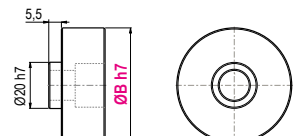
Tipo (grandezza) / Type (size)	1	2	3
<b>Art. 79</b> Perno calibrato per centraggio e orientamento Calibrated centering and orientation pin	ØC h7 -	-	20
	M -	-	16
	ØB -	-	10-12-14-16-18-20
	Cod. -	-	7.79.20M16/ØB



<b>Art. 297</b> Coppia di tasselli di posizionamento completi di vite M5 x 10 Pair of positioning key-nuts with M5 x 10 clamping screw	<b>B</b> 10 - 12 - 14 - 16 - 18 - 20 - 22 - 24 - 28 - 36	-
	Cod. 2.29.71000	-



<b>Art. 640P</b> Perno calibrato per centraggio Calibrated centering pin	ØB * Specificare	* Specify always
	Cod. 7.64.0P1000	7.64.0P2000



\* Specificare sempre quota B - Specify always B dimension

**RIALZI IN ACCIAIO per MORSE Art.640**  
**STEEL RISERS for VISES Art.640**

Tipo Rialzo (grandezza) - Riser Type (size)		1				2			
<b>Art. 641H</b>	ØA	119				158			
<i>Tipo / Type 1 e 2</i>	C	50	75	100	130	50	75	100	130
Rialzo semplice Simple riser	F	9				11			
	L	92				120			
	M	35				35			
	ØJ	50 H7				50 H7			
	kg	2,4	3,6	4,5	5	4,7	7,4	9,2	10
	Cod.	7.64.1H100/50	7.64.1H100/75	7.64.1H100/100	7.64.1H100/130	7.64.1H200/50	7.64.1H200/75	7.64.1H200/100	7.64.1H200/130



Tipo Rialzo (grandezza) - Riser Type (size)		3			
<b>Art. 641H</b>	A	166			
<i>Tipo / Type 3 x 166</i>	B	145			
Rialzo semplice Simple riser	C	50	75	100	145
	D	120			
	E	120			
	L	140			
	L1	60			
	M	126			
	M1	70			
	ØJ	50 H7			
	kg	7,5	8	9,6	14
	Cod.	7.64.1H3166/50	7.64.1H3166/75	7.64.1H3166/100	7.64.1H3166/145



Tipo Rialzo (grandezza) - Riser Type (size)		3			
<b>Art. 641H</b>	A	266			
<i>Tipo / Type 3 x 266</i>	B	125			
Rialzo semplice Simple riser	C	50	75	100	145
	D	200			
	E	200			
	L	240			
	L1	160			
	M	125			
	M1	80			
	ØJ	-			
	kg	10,6	11,8	14,5	21,5
	Cod.	7.64.1H3266/50	7.64.1H3266/75	7.64.1H3266/100	7.64.1H3266/145

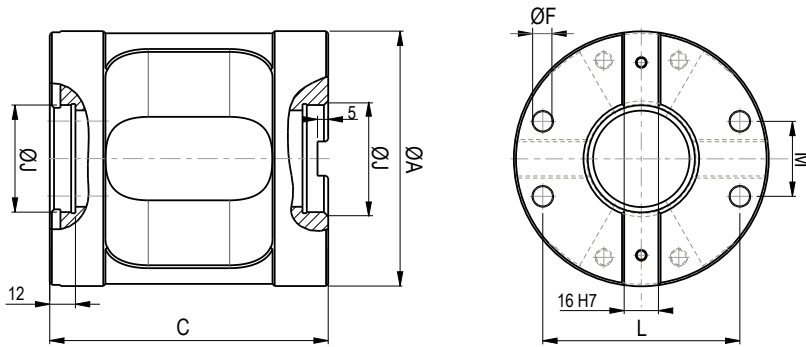


**RIALZI IN ACCIAIO per MORSE Art.640**  
**STEEL RISERS for VISES Art.640**

**Art. 641H**

Tipo / Type **1 e 2**

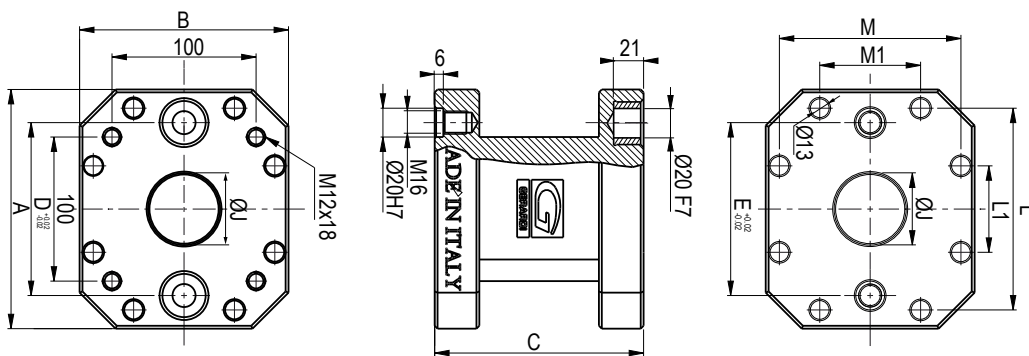
Rialzo semplice  
 Simple riser



**Art. 641H**

Tipo / Type **3 x 166**

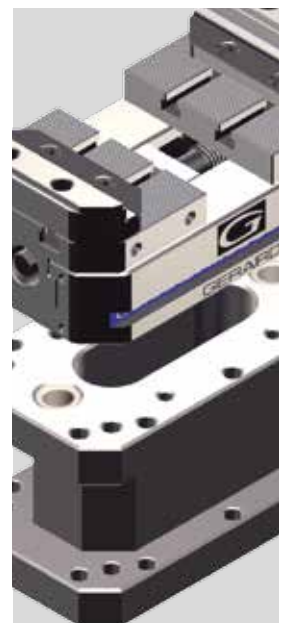
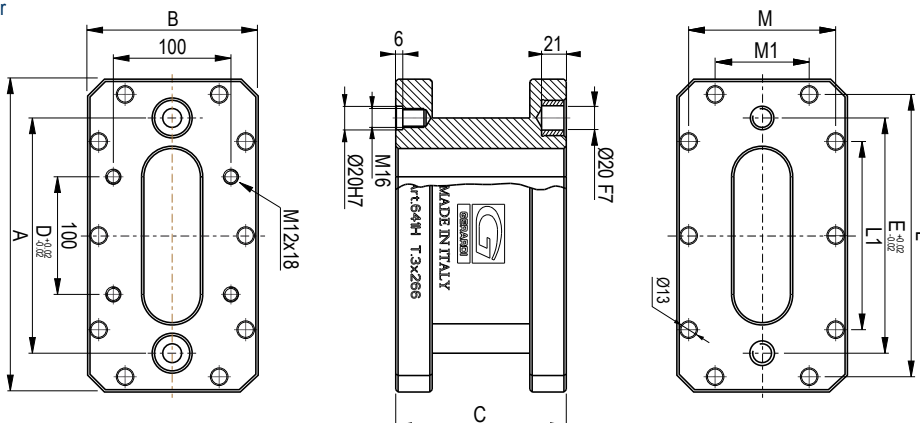
Rialzo semplice  
 Simple riser



**Art. 641H**

Tipo / Type **3 x 266**

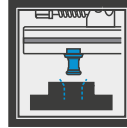
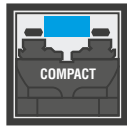
Rialzo semplice  
 Simple riser



# ESEMPI APPLICATIVI MORSE COMPACT GRIP SU CENTRI DI LAVORO A 5 ASSI

## COMPACT GRIP VISES APPLICATION EXAMPLES ON 5 AXIS MACHINES

NOVITA' ASSOLUTA  
**NEW!**



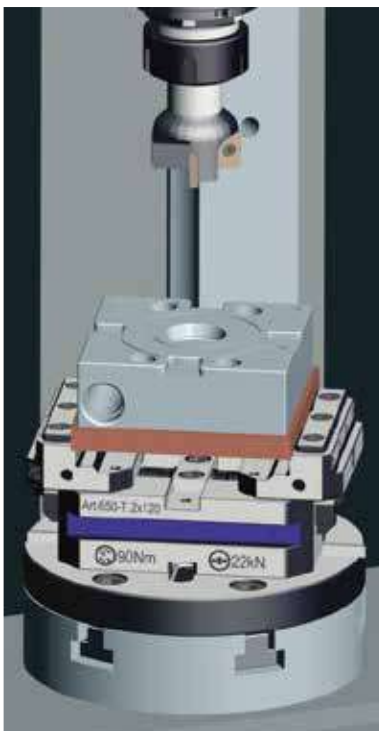
### Art. 650 Compact Grip

La novità assoluta per centri a 5 assi e sistemi multipli sono le morse autocentranti Compact Grip. Il loro nome accosta le principali peculiarità della morsa date dall'estrema compattezza e maneggevolezza al nome del sistema di inserti che adotta, cosiddetto "GRIP". Questo sistema consiste in una gamma di inserti ganascia modulari montati sopra al corpo ganascia principale con la funzione di serrare il particolare da lavorare tramite dei dentini affilati o conformati a seconda del tipo di materiale e di durezza.

The absolute news for 5 axis machine centres and new multiclamping system are the self-centering Compact Grip vises. Their name identifies the main vise features which are the extreme compactness and easiest handling and the system of inserts which adopts, so called "GRIP". This system includes a range of jaw plates assembled on the top of the main jaw with the function of clamping the workpiece through sharp or duly shaped teeth according to the material type and hardness to clamp.



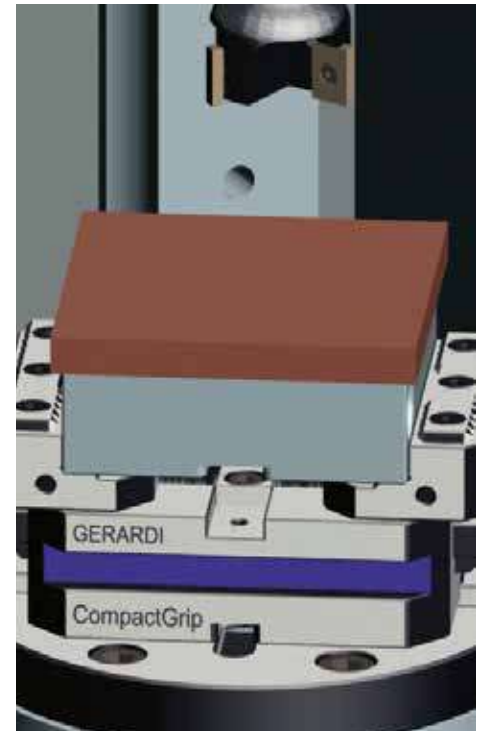
7



Tramite l'inserto Grip si esegue la sgrossatura e la finitura del pezzo sui cinque lati.  
 Through the Grip insert you can rough mill and finish the workpiece on five sides.



Dettaglio Inserto Grip.  
 Insert Grip detail.

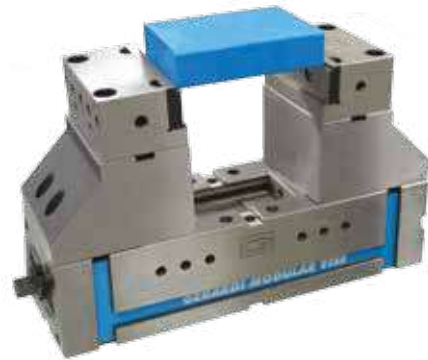
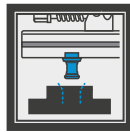


Tramite il gradino liscio della ganascia si rimuove il sovrametallo rimanente e si finisce il particolare.  
 Then through the smooth jaw step you can remove the remaining stock allowance from the workpiece and finish the workpiece.



## ESEMPI APPLICATIVI MORSE FMS SU CENTRI A 5 ASSI FMS VISES APPLICATION EXAMPLES ON 5 AXIS MACHINES

**NEW!**

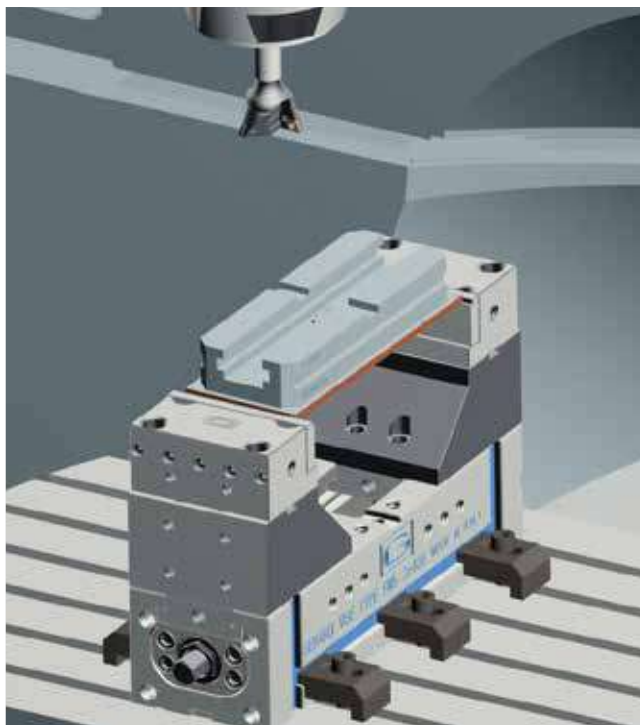
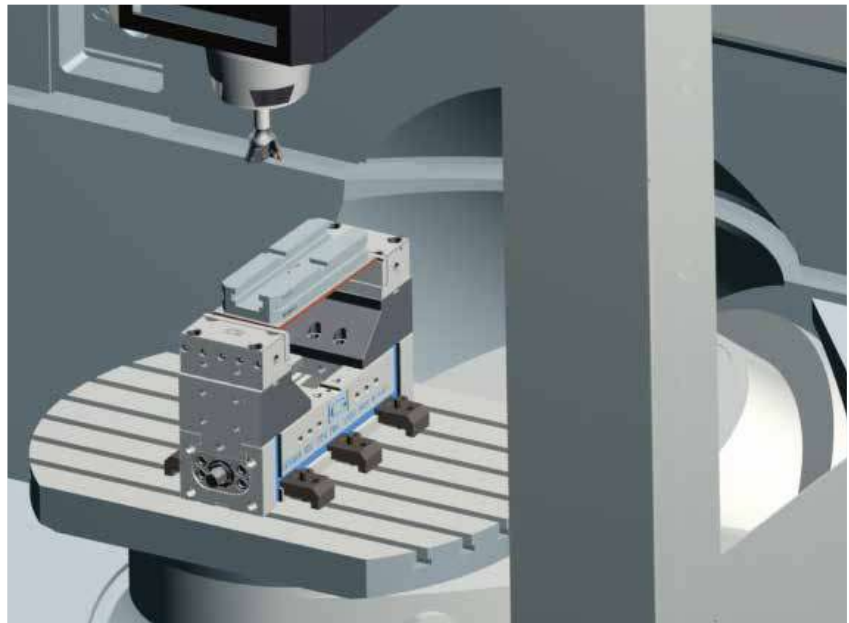


### Art.868 FMS series

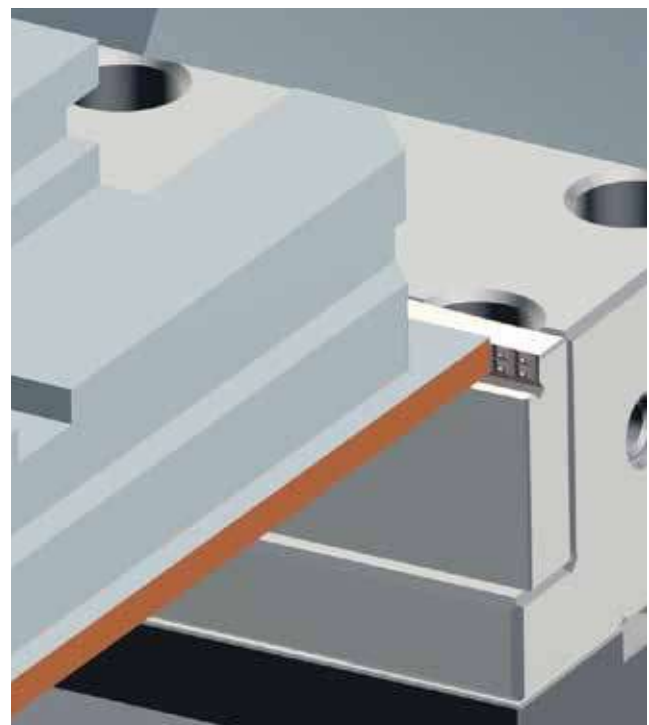
Grazie all'estrema versatilità del sistema modulare Gerardi anche le morse FMS, adeguatamente riconfigurate, possono rientrare nella cosiddetta categoria di morse Multitasking per centri di lavoro a 5 assi. Basterà quindi montare la base mobile Art.814 con le relative ganasce Art.805V sul modulo base universale Art.855.

Thanks to the extreme versatility of the Gerardi Modular System even the FMS vises, properly reconfigured, can be used as Multitasking vises for 5 axis machine centres.

It will be enough to assemble the movable base Art.814 with the Art.805V jaws on the universal vise base module Art.855



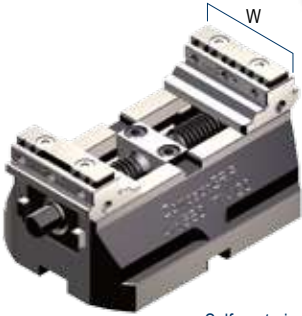
Particolare sollevato tramite base mobile Art.814  
Workpiece raised by movable base Art.814



Dettaglio serraggio tramite piastrina GRIP Art.247T  
Detail of clamping by GRIP jaw plate Art.247T

Tipo (grandezza) morsa / Vise (type) size		1			2		
		kN	12 kN		22 kN		
<b>Art. 650</b> Tipo / Type <b>1x120</b>	A	48	88	128			
	A1		6				
	W		50				
	B		65				
	C		45				
	C1		53				
	C2		61				
	D		80				
	E	80	120	160			
	F		52				
	L		12				
	L1		M8				
	kg	1,8	2,6	3,4			
	Cod.	7.65.01080	7.65.01120	7.65.01160			

Morsa Autocentrante Compact Grip con ganasce reversibili, ideale per centri a 5 assi

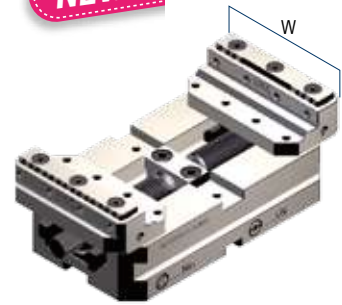


Self-centering Compact Grip vise. with reversible jaws, Ideal for five axis centres.

**COMPACT GRIP**  
**NEW!**

**Art. 650** Tipo / Type **2x160**

**COMPACT GRIP**  
**NEW!**



**AMPLIA LE TUE APPLICAZIONI TRAMITE GLI ACCESSORI MODULARI !**

**Art. 651H**  
Tipo / Type **1**  
Rialzo Semplice  
Simple Riser

Vedi gamma completa - See the complete range Page 7.26 / 7.27

Cod.	7.65.1H108 / 100	7.65.1H112 / 100	7.65.1H116 / 100
------	------------------	------------------	------------------

**Art. 651H**  
Tipo / Type **2**  
Rialzo Semplice  
Simple Riser

**Art. 660**  
Interasse / Type **52 mm**  
Tavola cambio rapido  
Quick change table

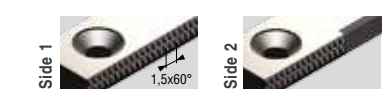
Vedi gamma completa - See the complete range Page 7.28 / 7.29

Cod.	9.66.05200
------	------------

**Art. 660**  
Interasse / Type **52 mm**  
Tavola cambio rapido  
Quick change table

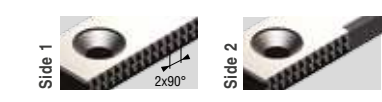
**Art. 650T G01**  
Inserti ganasce - Top jaw inserts  
**GRIP (Passo - Pitch 1,5mm)**

Cod.	7.65.0T100/01
€	



**Art. 650T G02**  
Inserti ganasce - Top jaw inserts  
**GRIP (Passo - Pitch 2mm)**

Cod.	7.65.0T100/02
€	

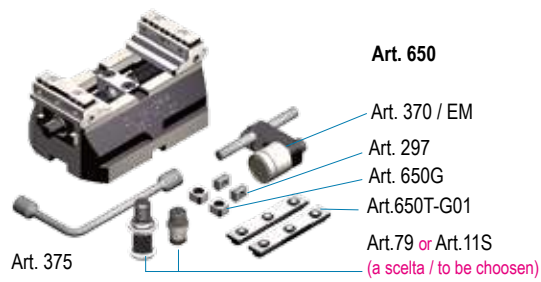


**Art. 650T G11**  
Inserti ganasce - Top jaw inserts  
**GRIP (Passo - Pitch 11mm)**

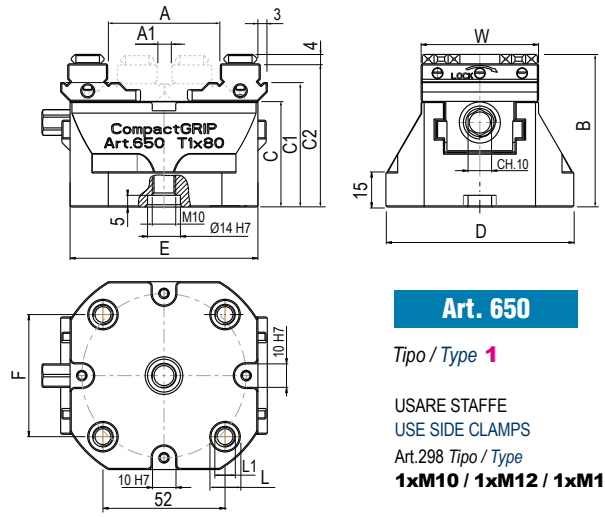
Cod.	7.65.0T100/11
€	



**Dotazione standard:**  
 ■ 1 chiave a pipa Art.375 ■ 1 coppia di inserti extra Art.650T ■ 1 perno calibrato per centraggio e orientamento Art.79 oppure 1 tirante zero point Art.11S ■ 1 arresto laterale Art.370  
 ■ 2 tasselli di posizionamento Art.297 ■ 2 tasselli per regolazione autocentrante Art.650G



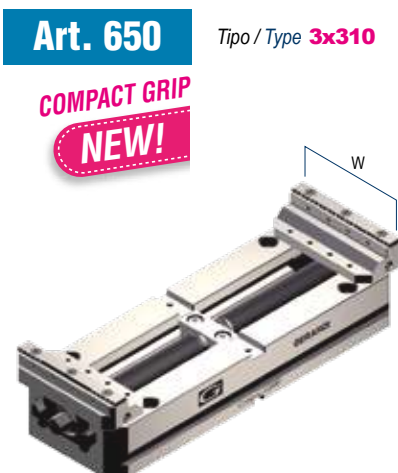
**Standard equipment:**  
 ■ 1 box wrench Art.375 ■ 1 extra pair of top jaw inserts Art.650T- G01  
 ■ 1 calibrated centering and orientation pin (Art.79) or 1 pull stud for zero point (Art.11A)  
 ■ 2 positioning key-nuts Art.297 ■ 2 self-centering key-nuts Art.650G ■ 1 workshop Art.370



**Art. 650**  
Tipo / Type **1**  
USARE STAFFE  
USE SIDE CLAMPS  
Art.298 Tipo / Type  
**1xM10 / 1xM12 / 1xM16**

		2 22 kN			
kN		22 kN			
A	96	136	176	216	
A1		10			
W		88			
B		65			
C		38			
C1		51			
C2		61			
D		90			
E	120	160	200	240	
F		52			
L		12			
L1		M8			
kg	3,6	4,4	5,2	5,8	
Cod.	7.65.02120	7.65.02160	7.65.02200	7.65.02240	

		3 32 kN				
		32 kN				
A	126	176	226	276	326	
A1		10				
W		123				
B		89				
C		57				
C1		75				
C2		85				
D		125				
E	160	210	260	310	360	
F		96				
L		16				
L1		M10				
kg	9,1	10,9	12,8	14,8	17	
Cod.	7.65.03160	7.65.03210	7.65.03260	7.65.03310	7.65.03360	



**Art. 650**  
 Tipo / Type **3x310**  
**COMPACT GRIP**  
**NEW!**

**UPGRADE YOUR VISE APPLICATIONS THROUGH MODULAR ACCESSORIES !**

**Art. 651H** Tipo / Type **2**

Cod.	7.65.1H212 / 100	7.65.1H216 / 100	7.65.1H220 / 100	7.65.1H224 / 100
------	------------------	------------------	------------------	------------------



**Art. 651H** Tipo / Type **3**

Vedi gamma completa - See the complete range Page 7.26 / 7.27

Cod.	7.65.1H316 / 100	7.65.1H321 / 100	7.65.1H326 / 100	7.65.1H331 / 100	7.65.1H336 / 100
------	------------------	------------------	------------------	------------------	------------------

**Art. 660** Interasse / Type **52mm**

Cod.	9.66.05200
------	------------



**Art. 660** Interasse / Type **96 mm**  
 Tavola cambio rapido  
 Quick change table

Vedi gamma completa - See the complete range Page 7.28 / 7.29

Cod.	9.66.09600
------	------------

Cod. 7.65.0T200/01

€

**Art. 650 G01**  
 Per materiali di durezza normale  
 For standard workpieces hardness clamping

Cod. 7.65.0T300/01

Cod. 7.65.0T200/02

€

**Art. 650 G02**  
 Per materiali di notevole durezza  
 For hardened workpieces clamping

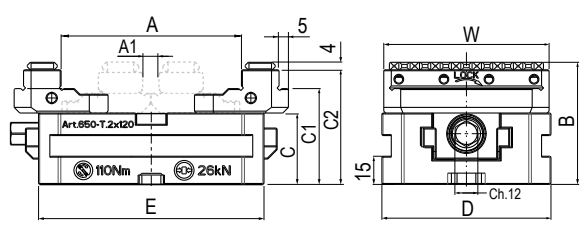
Cod. 7.65.0T300/02

Cod. 7.65.0T200/11

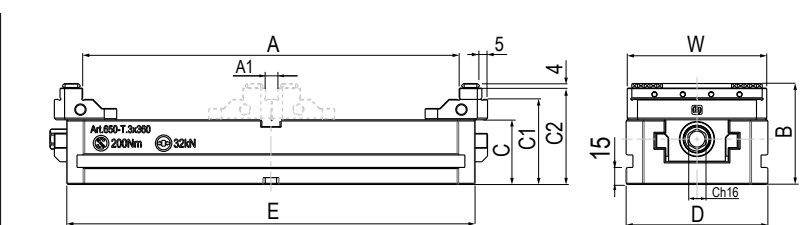
€

**Art. 650 G11**  
 Per materiali teneri  
 For soft material clamping

Cod. 7.65.0T300/11



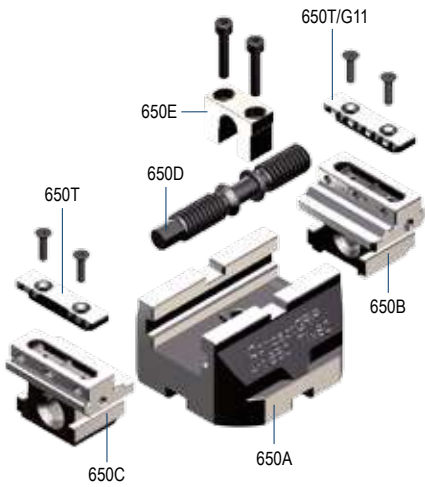
**Art. 650**  
 Tipo / Type **2**  
 USARE STAFFE  
 USE SIDE CLAMPS  
 Art.298 Tipo / Type  
**1xM10 / 1xM12 / 1xM16**



**Art. 650**  
 Tipo / Type **3**  
 USARE STAFFE  
 USE SIDE CLAMPS  
 Art.298 Tipo / Type  
**1xM10 / 1xM12 / 1xM16**

**Art. 650**

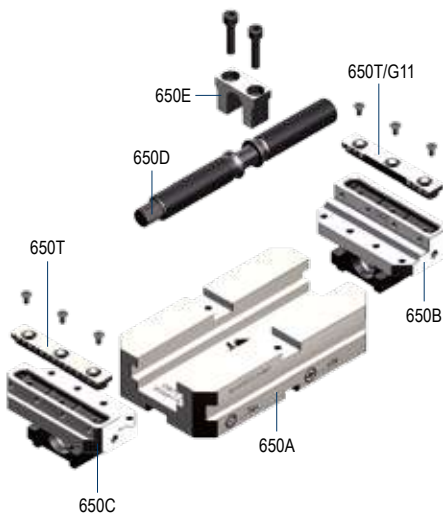
Tipo / Type 1

**NEW!**


Tipo / Type 1	1x80	1x120	1x160
<b>Art. 650A</b> Corpo base - Base body	Cod. 7.65.0A1080	7.65.0A1120	7.65.0A1160
<b>Art. 650B</b> * Ganascia integrale destra Solid jaw right hand	Cod.	7.65.0B1000	
<b>Art. 650C</b> * Ganascia integrale sinistra Solid jaw left hand	Cod.	7.65.0C1000	
<b>Art. 650D</b> Vite di bloccaggio - Main screw	Cod. 7.65.0D1080	7.65.0D1120	7.65.0D1160
<b>Art. 650E</b> Forcella - Yoke	Cod.	7.65.0E1000	
<b>Art. 650T / G11</b> Coppia di inserti ganasce Pair of top jaw inserts	Cod.	7.65.0T1000 / G11	

**Art. 650**

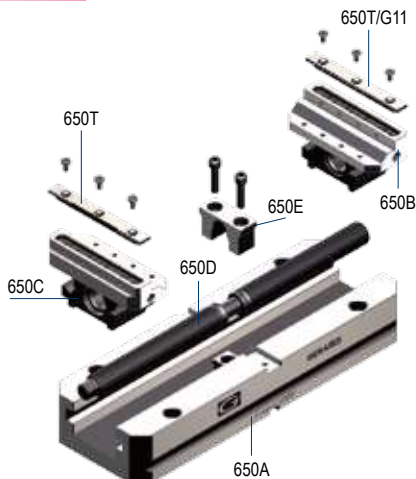
Tipo / Type 2

**NEW!**


Tipo / Type 2	2x120	2x160	2x200	2x240
<b>Art. 650A</b> Corpo base - Base body	Cod. 7.65.0A2120	7.65.0A2160	7.65.0A2200	7.65.0A2240
<b>Art. 650B</b> * Ganascia integrale destra Solid jaw right hand	Cod.	7.65.0B2000		
<b>Art. 650C</b> * Ganascia integrale sinistra Solid jaw left hand	Cod.	7.65.0C2000		
<b>Art. 650D</b> Vite di bloccaggio - Main screw	Cod. 7.65.0D2120	7.65.0D2160	7.65.0D2200	7.65.0D2240
<b>Art. 650E</b> Forcella - Yoke	Cod.	7.65.0E2000		
<b>Art. 650T / G11</b> Coppia di inserti ganasce Pair of top jaw inserts	Cod.	7.65.0T2000 / G11		

**Art. 650**

Tipo / Type 3

**NEW!**


Tipo / Type 3	3x160	3x210	3x260	3x310	3x360
<b>Art. 650A</b> Corpo base - Base body	Cod. 7.65.0A3160	7.65.0A3210	7.65.0A3260	7.65.0A3260	7.65.0A3360
<b>Art. 650B</b> * Ganascia integrale destra Solid jaw right hand	Cod.	7.65.0B3000			
<b>Art. 650C</b> * Ganascia integrale sinistra Solid jaw left hand	Cod.	7.65.0C3000			
<b>Art. 650D</b> Vite di bloccaggio - Main screw	Cod. 7.65.0D3160	7.65.0D3210	7.65.0D3260	7.65.0D3310	7.65.0D3360
<b>Art. 650E</b> Forcella - Yoke	Cod.	7.65.0D3000			
<b>Art. 650T / G11</b> Coppia di inserti ganasce Pair of top jaw inserts	Cod.	7.65.0T3000/G11			

# ACCESSORI PER MORSE COMPACT GRIP Art.650

## Art.650 COMPACT GRIP VISES ACCESSORIES

**COMPACT GRIP**  
**NEW!**

Coppie di inserti ganasce - Pair of top jaw inserts

1

2

3

### Art. 650S

**LISCI + RUVIDI - SMOOTH + ROUGH**

Materiali teneri e lavorazioni finali  
Soft material clamping and final machining



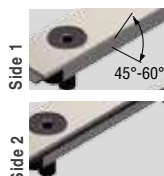
Cod. 7.65.0S100 7.65.0S200 7.65.0S300



### Art. 650R

**CODA DI RONDINE - DOVE TAIL**

Miglior presa pezzo  
Best workpiece clamping



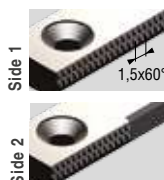
Cod. 7.65.0R100 7.65.0R200 7.65.0R300



### Art. 650T G01

**GRIP (Passo - Pitch 1,5mm)**

Per materiali di durezza normale  
For standard workpieces hardness clamping



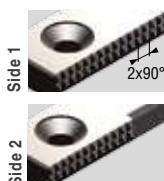
Cod. 7.65.0T100/G01 7.65.0T200/G01 7.65.0T300/G01



### Art. 650T G02

**GRIP (Passo - Pitch 2mm)**

Per materiali di notevole durezza  
For hardened workpieces clamping



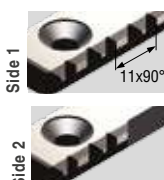
Cod. 7.65.0T100/G02 7.65.0T200/G02 7.65.0T300/G02



### Art. 650T G11

**GRIP (Passo - Pitch 11mm)**

Per materiali teneri  
For soft material clamping

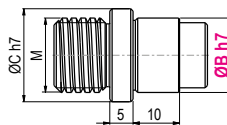


Cod. 7.65.0T100/G11 7.65.0T200/G11 7.65.0T300/G11



### Art. 79

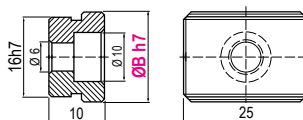
Perno calibrato per centraggio e orientamento  
Calibrated centering and orientation pin



ØC h7	14	14	20
M	10	12	16
ØB	10 - 12 - 14 - 16 - 18 - 20		
Cod.	7.79.14M10/ØB	7.79.14M12/ØB	7.79.20M16/ØB

### Art. 297

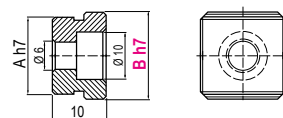
Coppia di tasselli di posizionamento  
completi di vite M5 x 10  
Pair of positioning key-nuts with M5 x 10 clamping screw



<b>B</b>	10 - 12 - 14 - 16 - 18 - 20 - 22 - 24 - 28 - 36
Cod.	2.29.71000

### Art. 650G

Coppia di tasselli di posizionamento  
e regolazione autocentrante  
Pair of key-nuts for positioning  
and self-centering

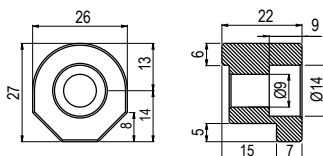


<b>A</b>	10	16
<b>B</b>	10 - 12 - 14 - 16 - 18 - 20 - 22 - 24 - 28 - 36	
Cod.	7.65.0G1000	7.65.0G2000

Specificare sempre quota B - Specify always B dimension

### Art. 298 / CGR

Staffa per Compact Grip  
Compact Grip holding clamp



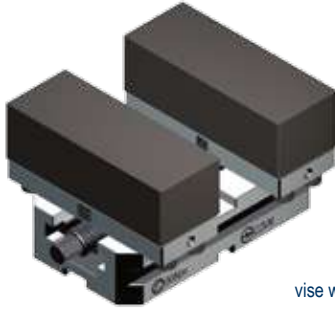
Cod. 7.29.81000/CGR

Tipo (grandezza) morsa / Vise (type) size

kN	2			
	22 kN			
A	30	70	110	150
W	128			
B	93			
C	38			
C1	53			
D	90			
E	120	160	200	240
F	52			
G	49			
L	Ø12			
L1	M8			
kg	7,9	8,7	9,5	10,1
Cod.	7.95.02120	7.95.02160	7.95.02200	7.95.02240

**Art. 950**

 Tipo / Type **2x160**

 Morsa Autocentrante Compact Grip con ganasce **lavorabili in acciaio**, ideale per centri a 5 assi

**COMPACT GRIP**  
**NEW!**

 Self-centering Compact Grip vise with **machineable steel jaws**, Ideal for five axis centres.

**AMPLIA LE TUE APPLICAZIONI TRAMITE GLI ACCESSORI MODULARI !**
**Art. 651H**

 Tipo / Type **2**

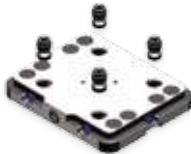
 Rialzo Semplice  
 Simple Riser


Vedi gamma completa - See the complete range Page 7.26 / 7.27

Cod.	7.65.1H212 / 100	7.65.1H216 / 100	7.65.1H220 / 100	7.65.1H224 / 100
------	------------------	------------------	------------------	------------------

**Art. 660**

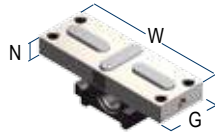
 Interasse / Type **52 mm**

 Tavola cambio rapido  
 Quick change table


Vedi gamma completa - See the complete range Page 7.28 / 7.29

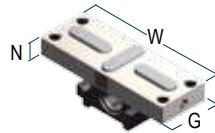
Cod.	9.66.05200			
------	------------	--	--	--

**Art. 950B**

 Slitta **DESTRA** con chiavette  
 Solid hardened slide **RIGHT HAND** with positioning key nuts


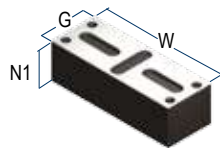
Cod.	7.95.0B2000			
------	-------------	--	--	--

**Art. 950C**

 Slitta **SINISTRA** con chiavette  
 Solid hardened slide **LEFT HAND** with positioning key nuts


Cod.	7.95.0C2000			
------	-------------	--	--	--

**Art. 950D**

 Ganasce lavorabile in acciaio  
 Machineable steel jaw


Cod.	7.95.0D2000			
------	-------------	--	--	--

**Dotazione standard:**

- 1 chiave a pipa Art.375 ■ 1 coppia di inserti extra Art.650T ■ 1 perno calibrato per centraggio e orientamento Art.79 oppure 1 tirante zero point Art.11S
- 1 arresto laterale Art.370 ■ 2 tasselli di posizionamento Art.297
- 2 tasselli per regolazione autocentrante Art.650G


**Art. 950**

Art. 370 / EM

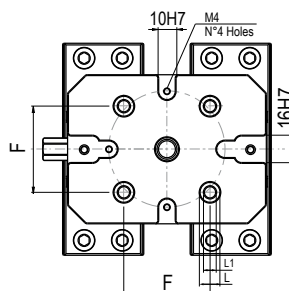
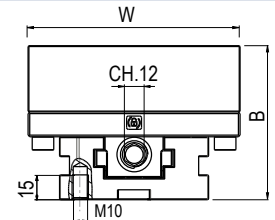
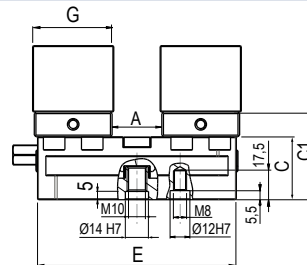
 Art. 297  
 Art. 650G

 Art.79 or Art.11S  
 (a scelta / to be choosen)

Art. 375

**Standard equipment:**

- 1 box wrench Art.375 ■ 1 extra pair of top jaw inserts Art.650T- G01
- 1 calibrated centering and orientation pin (Art.79) or 1 pull stud for zero point (Art.11A)
- 2 positioning key-nuts Art.297 ■ 2 self-centering key-nuts Art.650G ■ 1 workstop Art.370


**Art. 950**

 Tipo / Type **2**

 USARE STAFFE  
 USE SIDE CLAMPS

 Art.298 Tipo / Type  
**1xM10 / 1xM12 / 1xM16**



MADE IN ITALY

Tipo (grandezza) morsa / Vise (type) size

3

kN	32 kN				
A	40	90	130	180	230
W	160				
B	124				
C	57				
C1	77				
D	125				
E	160	210	260	310	360
F	96				
G	59				
L	Ø16				
L1	M10				
kg	16.9	18.7	20.6	22.6	24.8
Cod.	7.95.03160	7.95.03210	7.95.03260	7.95.03310	7.95.03360

**Art. 950**

Tipo / Type **3x360**

Morsa Autocentrante Compact Grip con ganasce **lavorabili in acciaio**, ideale per centri a 5 assi



**COMPACT GRIP**  
**NEW!**

Self-centering Compact Grip vise with **machineable steel jaws**, Ideal for five axis centres.

**UPGRADE YOUR VISE APPLICATIONS THROUGH MODULAR ACCESSORIES !**

**Art. 651H**

Tipo / Type **3**

Rialzo Semplice  
Simple Riser



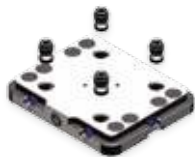
Vedi gamma completa - See the complete range Page 7.26 / 7.27

Cod.	7.65.1H316 / 100	7.65.1H321 / 100	7.65.1H326 / 100	7.65.1H331 / 100	7.65.1H336 / 100
------	------------------	------------------	------------------	------------------	------------------

**Art. 660**

Interasse / Type **96 mm**

Tavola cambio rapido  
Quick change table

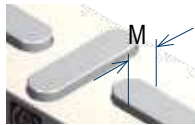


Vedi gamma completa - See the complete range Page 7.28 / 7.29

Cod.	9.66.09600				
------	------------	--	--	--	--

**Art. 950B**

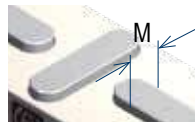
Slitta **DESTRA** con chiavette  
Solid hardened slide **RIGHT HAND** with positioning key nuts



Cod.	7.95.0B3000				
------	-------------	--	--	--	--

**Art. 950C**

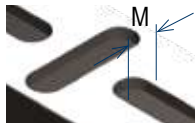
Slitta **SINISTRA** con chiavette  
Solid hardened slide **LEFT HAND** with positioning key nuts



Cod.	7.95.0C3000				
------	-------------	--	--	--	--

**Art. 950D**

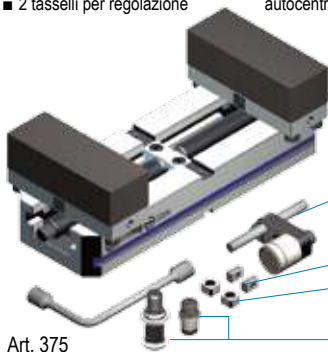
Ganascia lavorabile in acciaio  
Machineable steel jaw



Cod.	7.95.0D3000				
------	-------------	--	--	--	--

**Dotazione standard:**

- 1 chiave a pipa Art.375 ■ 1 coppia di inserti extra Art.650T ■ 1 perno calibrato per centraggio e orientamento Art.79 oppure 1 tirante zero point Art.115
- 1 arresto laterale Art.370 ■ 2 tasselli di posizionamento Art.297
- 2 tasselli per regolazione autocentrante Art.650G



**Art. 950**

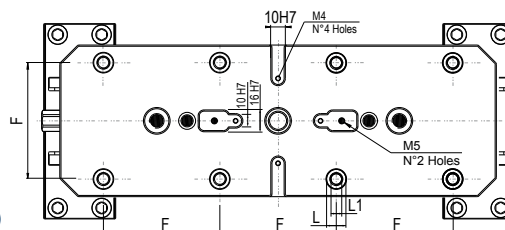
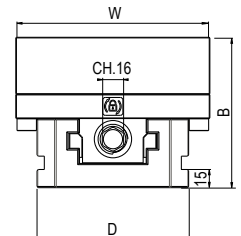
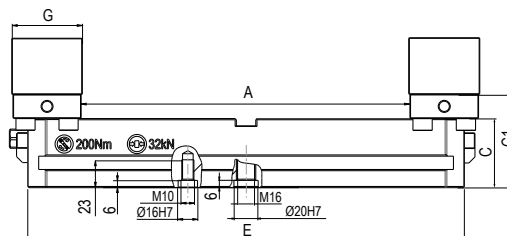
Art. 370 / EM

Art. 297  
Art. 650G

Art.79 or Art.115  
(a scelta / to be choosen)

**Standard equipment:**

- 1 box wrench Art.375 ■ 1 extra pair of top jaw inserts Art.650T- G01
- 1 calibrated centering and orientation pin (Art.79) or 1 pull stud for zero point (Art.11A)
- 2 positioning key-nuts Art.297 ■ 2 self-centering key-nuts Art.650G ■ 1 workshop Art.370



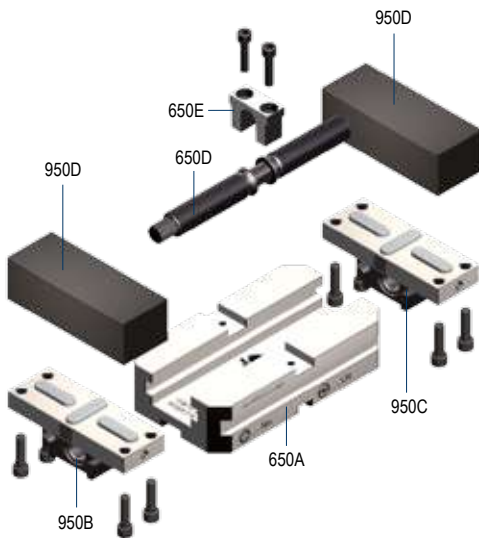
**Art. 950**

Tipo / Type **3**

USARE STAFFE  
USE SIDE CLAMPS  
Art.298 Tipo / Type  
**1xM10 / 1xM12 / 1xM16**

**Art. 950**

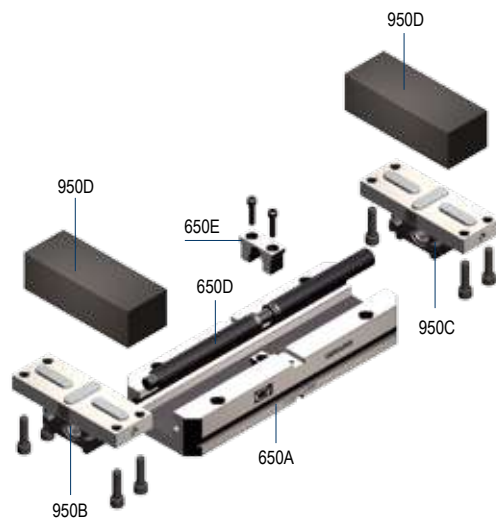
Tipo / Type 2

**NEW!**


Tipo / Type 2	2x120	2x160	2x200	2x240
<b>Art. 650A</b> Corpo base - Base body	Cod. 7.65.0A2120	7.65.0A2160	7.65.0A2200	7.65.0A2240
<b>Art. 950B</b> * Ganascia integrale destra Solid jaw right hand	Cod.	7.95.0B2000		
<b>Art. 950C</b> * Ganascia integrale sinistra Solid jaw left hand	Cod.	7.95.0C2000		
<b>Art. 650D</b> Vite di bloccaggio - Main screw	Cod. 7.65.0D2120	7.65.0D2160	7.65.0D2200	7.65.0D2240
<b>Art. 650E</b> Forcella - Yoke	Cod.	7.65.0E2000		
<b>Art. 950D</b> Ganascia lavorabile in acciaio Machineable steel jaw	Cod.	7.95.0D2000		

**Art. 950**

Tipo / Type 3

**NEW!**


Tipo / Type 3	3x160	3x210	3x260	3x310	3x360
<b>Art. 650A</b> Corpo base - Base body	Cod. 7.65.0A3160	7.65.0A3210	7.65.0A3260	7.65.0A3310	7.65.0A3360
<b>Art. 950B</b> * Ganascia integrale destra Solid jaw right hand	Cod.	7.95.0B3000			
<b>Art. 950C</b> * Ganascia integrale sinistra Solid jaw left hand	Cod.	7.95.0C3000			
<b>Art. 650D</b> Vite di bloccaggio - Main screw	Cod. 7.65.0D3160	7.65.0D3210	7.65.0D3260	7.65.0D3310	7.65.0D3360
<b>Art. 650E</b> Forcella - Yoke	Cod.	7.65.0D3000			
<b>Art. 950D</b> Ganascia lavorabile in acciaio Machineable steel jaw	Cod.	7.95.0D3000			



# ACCESSORI PER MORSE COMPACT GRIP Art.950

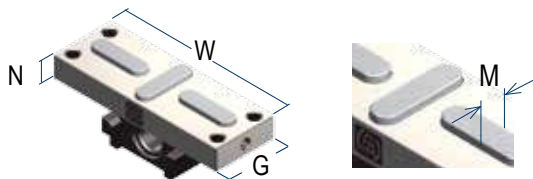
## Art.950 COMPACT GRIP VISES ACCESSORIES

**COMPACT GRIP**  
**NEW!**

Tipo (grandezza) / Type (size)	2	3
W	128	160
G	49	59
M	10 H7	14 H7
P	30	36
Q	23	36
Q1	110	142
R	40	50
S	Ø9	Ø11

### Art. 950B

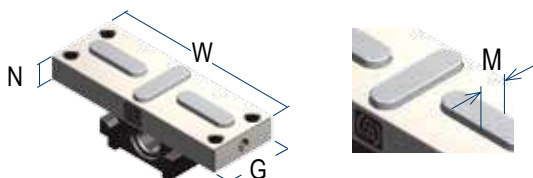
Slitta **DESTRA** con chiavette  
Solid hardened slide **RIGHT HAND**  
with positioning key nuts



N	15	20
Cod.	7.95.0B2000	7.95.0B3000

### Art. 950C

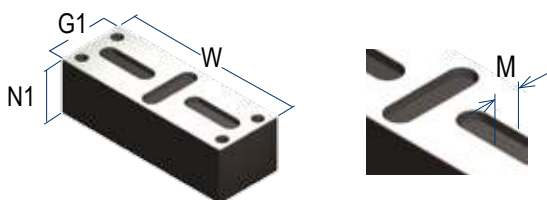
Slitta **SINISTRA** con chiavette  
Solid hardened slide **LEFT HAND**  
with positioning key nuts



N	15	20
Cod.	7.95.0C2000	7.95.0C3000

### Art. 950D

Ganascia lavorabile in acciaio  
Machineable steel jaw

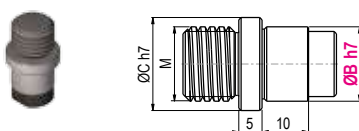


N1	30	47
Cod.	7.95.0D2000	7.95.0D3000

G1= G+2 mm

### Art. 79

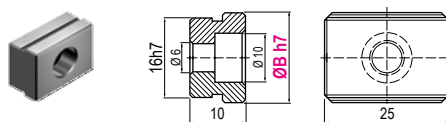
Perno calibrato per centraggio e orientamento  
Calibrated centering and orientation pin



ØC h7	14	20
M	12	16
ØB	10 - 12 - 14 - 16 - 18 - 20	
Cod.	7.79.14M12/ØB	7.79.20M16/ØB

### Art. 297

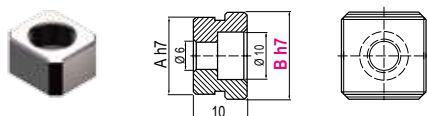
Coppia di tasselli di posizionamento  
completi di vite M5 x 10  
Pair of positioning key-nuts with  
M5 x 10 clamping screw



<b>B</b>	10 - 12 - 14 - 16 - 18 - 20 - 22 - 24 - 28 - 36
Cod.	2.29.71000

### Art. 650G

Coppia di tasselli di posizionamento  
e regolazione autocentrante  
Pair of key-nuts for positioning  
and self-centering

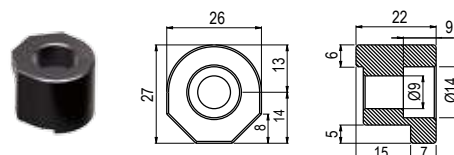


A	16
<b>B</b>	10 - 12 - 14 - 16 - 18 - 20 - 22 - 24 - 28 - 36
Cod.	7.65.0G2000

Specificare sempre quota **B** - Specify always **B** dimension

### Art. 298 / CGR

Staffa per Compact Grip  
Compact Grip holding clamp



Cod.	7.29.81000/CGR
------	----------------

# RIALZI IN ALLUMINIO per MORSE COMPACT GRIP Art.650 - Art.950

## ALUMINUM RISERS for COMPACT GRIP VISES Art.650 - Art.950

**COMPACT GRIP**  
**NEW!**

Tipo Rialzo (grandezza) - Riser Type (size)

**1**

### Art. 651H

Tipo / Type **1**

Rialzo semplice  
Simple riser

**NEW!**



ØA	80			120		
B	80			80		
* C	50	75	100	50	75	100
D	128			178		
E	-			150		
L	52			52		
M	52			52		
ØJ	110			150		
K	10			10		
K1	-			16		
kg	1,08	1,41	1,75	2,09	2,63	3,17
Cod.	7.65.1H108 / 50	7.65.1H108 / 75	7.65.1H108 / 100	7.65.1H112 / 50	7.65.1H112 / 75	7.65.1H112 / 100

Tipo Rialzo (grandezza) - Riser Type (size)

**2**

### Art. 651H

Tipo / Type **2**

Rialzo semplice  
Simple riser

**NEW!**



A	120			160			200		
B	90			90			90		
* C	50	75	100	50	75	100	50	75	100
D	210			210			210		
E	-			150			150		
L	65			65			65		
M	90			90			90		
ØJ	183			183			185		
kg	3,07	3,71	4,32	3,09	3,90	4,73	3,38	4,45	5,52
Cod.	7.65.1H212/50	7.65.1H212/75	7.65.1H212/100	7.65.1H216/50	7.65.1H216/75	7.65.1H216/100	7.65.1H220/50	7.65.1H220/75	7.65.1H220/100

Tipo Rialzo (grandezza) - Riser Type (size)

**3**

### Art. 651H

Tipo / Type **3**

Rialzo semplice  
Simple riser

**NEW!**



A	160			210			260		
B	125			125			125		
* C	50	75	100	50	75	100	50	75	100
D	240			240			332		
E	150			150			150		
E1	-			-			200		
L	96			96			96		
L1	-			-			-		
M	96			96			96		
M1	-			-			-		
ØJ	185			185			185		
ØJ1	-			-			290		
kg	3,34	4,49	5,68	3,85	5,40	6,99	5,73	7,69	9,69
Cod.	7.65.1H316/50	7.65.1H316/75	7.65.1H316/100	7.65.1H321/50	7.65.1H321/75	7.65.1H321/100	7.65.1H326/50	7.65.1H326/75	7.65.1H326/100

# RIALZI IN ALLUMINIO per MORSE COMPACT GRIP Art.650 - Art.950 ALUMINUM RISERS for COMPACT GRIP VISES Art.650 - Art.950

**COMPACT GRIP**  
**NEW!**

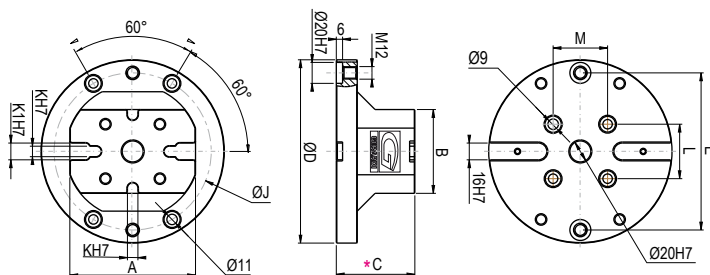
1			
ØA	160		
B	80		
C	50	75	100
D	178		
E	150		
L	52		
M	52		
ØJ	150		
K	10		
K1	16		
kg	2,40	3,15	3,90
Cod.	7.65.1H116 / 50	7.65.1H116 / 75	7.65.1H116 / 100

**NEW!**

## Art. 651H

Tipo / Type **1**

Rialzo semplice  
Simple riser



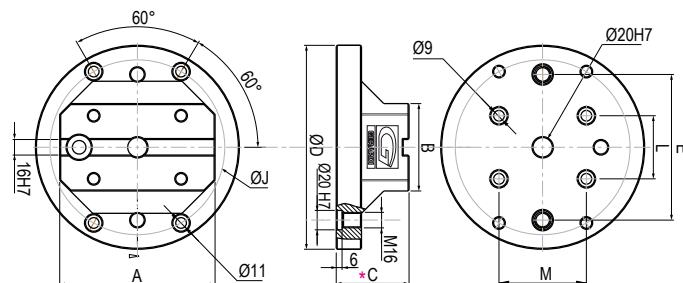
2			
A	240		
B	90		
C	50	75	100
D	249		
E	200		
L	65		
M	150		
ØJ	185		
kg	4,13	5,45	6,75
Cod.	7.65.1H224/50	7.65.1H224/75	7.65.1H224/100

**NEW!**

## Art. 651H

Tipo / Type **2**

Rialzo semplice  
Simple riser



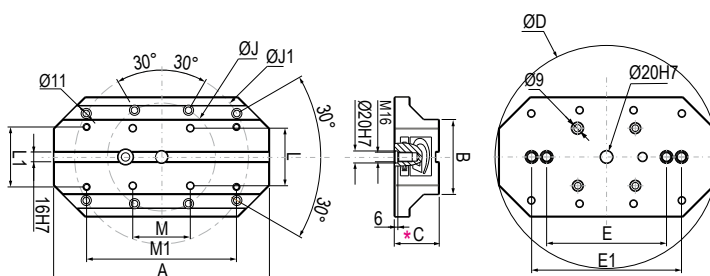
3						
A	310			360		
B	125			125		
C	50	75	100	50	75	100
D	327			373		
E	150			200		
E1	200			250		
L	96			96		
L1	100			100		
M	96			96		
M1	200			250		
ØJ	185			185		
ØJ1	290			290		
kg	6,14	8,50	10,91	7,02	9,80	12,62
Cod.	7.65.1H331/50	7.65.1H331/75	7.65.1H331/100	7.65.1H336/50	7.65.1H336/75	7.65.1H336/100

**NEW!**

## Art. 651H

Tipo / Type **3**

Rialzo semplice  
Simple riser



## TAVOLA CAMBIO RAPIDO per MORSE COMPACT GRIP QUICK CHANGE TABLE for COMPACT GRIP VISES

Per Morse Tipo - For Vises Type INTERASSE - PITCH	1 - 2 52	3 96
<b>Art. 660</b>		
A	100	150
B	50	50
B1	-	100
C	27	27
D	116	156
E	150	190
F	52	96
L	Ø12 h7	Ø16 h7
L1	M8	M10
kg	3	5,2
Cod.	9.66.05200	9.66.09600

**Dotazione standard - Standard equipment:**  
 N°4 Tiranti Art.660B - # 4 Pull-studs Art.660B

### Art. 660

Tavola cambio rapido ad azionamento meccanico  
 Quick change table mechanical control

**NEW!**



## RIALZO PER TAVOLA CAMBIO RAPIDO RISER for QUICK CHANGE TABLE

Per Morse Tipo - For Vises Type INTERASSE - PITCH	1 - 2 52	3 96
<b>Art. 661H</b>		
A	100	100
A1	-	150
A2	170	190
B	50	50
B1	-	100
C	100	100
D	156	176
D1	116	136
E	190	210
E1	150	170
F	96	96
F1	52	52
G	136	160
L2	Ø16 H7 / M10	Ø16 H7 / M10
L3	Ø12 H7 / M8	Ø12 H7 / M8
L4	Ø20 H7 / M16	Ø20 H7 / M16
kg	5	6,5
Cod.	9.66.1H100	9.66.1H200

### Art. 661H

Rialzo in alluminio per tavola cambio rapido  
 Simple aluminum riser for quick change table

**NEW!**



## SUPPORTO PIRAMIDALE per MORSE MULTITASKING & COMPACT GRIP PYRAMIDAL SUPPORT for MULTITASKING & COMPACT GRIP VISES

Tipo (grandezza) / (type) size INCLINAZIONE - ANGLE	3 45°	MORSE COMPATIBILI COMPATIBLE VISES
<b>Art. 643H</b>		
ØA	310	<b>Multitasking</b> <b>Art. 640 - T.1</b>
ØB	275	
ØC	265	<b>Compact Grip</b> <b>Art. 650 - T.2x120</b> <b>Art. 650 - T.2x160</b> <b>Art. 650 - T.2x200</b>  <b>Art. 950 - T.2x120</b> <b>Art. 950 - T.2x160</b> <b>Art. 950 - T.2x200</b>
D	130,8	
D1	22	
F	150 (±0,02)	
H	109	
H1	154	
H2	100	
kg	13,2	
Cod.	7.64.3H310/ 345	

### Art. 643H

Supporto piramidale in alluminio a tripla posizione  
 Aluminum pyramidal support with triple positioning

**NEW!**



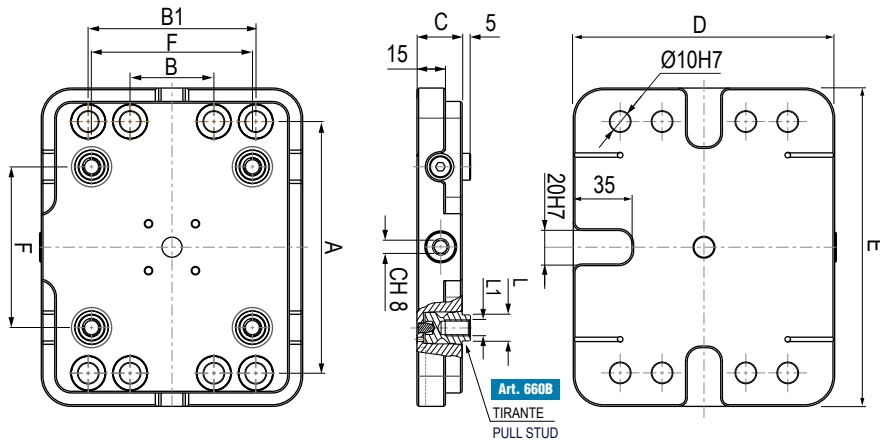
**N.B:** Richiedere scheda tecnica per maggiori informazioni - Technical data sheet on request

## TAVOLA CAMBIO RAPIDO per MORSE COMPACT GRIP QUICK CHANGE TABLE for COMPACT GRIP VISES

**COMPACT GRIP**  
**NEW!**

**Art. 660**

Tavola cambio rapido ad azionamento meccanico  
Quick change table mechanical control



**Art. 660B**

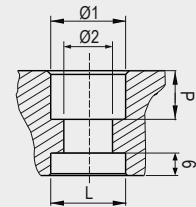
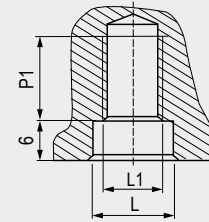
Tiranti per tavola cambio rapido  
Quick change table pull studs



Tipo - Type 1



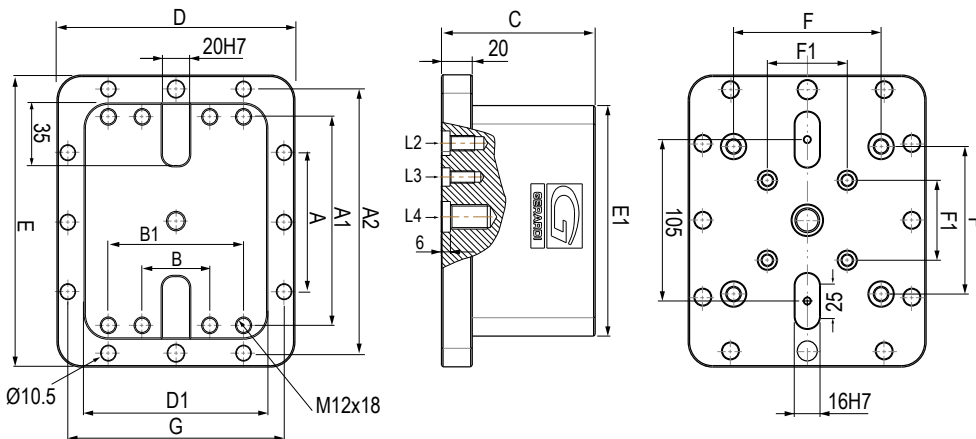
Tipo - Type 2



## RIALZO PER TAVOLA CAMBIO RAPIDO RISER for QUICK CHANGE TABLE

**Art. 661H**

Rialzo in alluminio per tavola cambio rapido  
Simple aluminum riser for quick change table

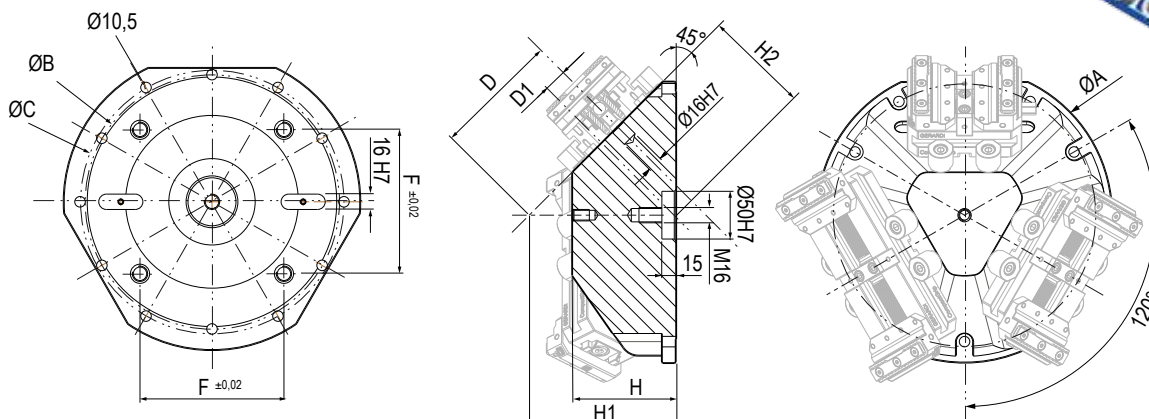


Type	1	2
L	Ø12 h7	Ø16 h7
L1	M8	M10
Ø1	13	15
Ø2	9	11
P	9	11
P1	12	18
Code	9.66.0B100	9.66.0B200

## SUPPORTO PIRAMIDALE per MORSE COMPACT GRIP PYRAMIDAL SUPPORT for COMPACT GRIP VISES

**Art. 643H**

Supporto piramidale in alluminio a tripla posizione  
Aluminum pyramidal support with triple positioning

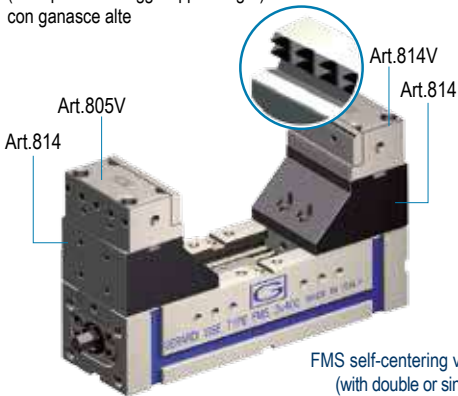


Tipo (grandezza) morsa / Vise (type) size

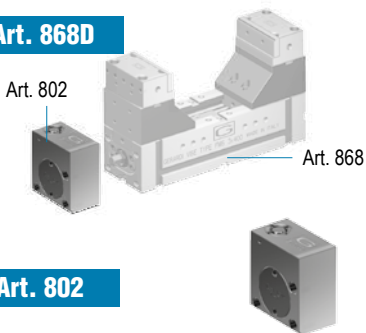
kN	1		2				3	
	25 kN		25 kN				30 kN	
A	130	230	182	282	382	482	244	344
B	99,5			117			137	
C	70			90			100	
D	232		300	400	500	600	400	500
E	252		320	420	520	620	425	525
F	169,5			207			237	
G	75			95			125	
H	75			85			98	
L	56			64			84	
J3	76	76		101			132	
J4	55	55		63			82	
X	39,5			47			57	
W	74			94			124	
kg	-			-			-	

**Art. 868**

 Morsa FMS autocentrante  
(con opzione serraggi doppi o singoli)  
con ganasce alte

**3 MORSE IN 1**  
VISES IN 1

 FMS self-centering vise  
(with double or single  
clamping option) with high jaws

Cod.	5.86.81200	5.86.81300	5.86.82300	5.86.82400	5.86.82500	5.86.82600	5.86.83400	5.86.83500
------	------------	------------	------------	------------	------------	------------	------------	------------

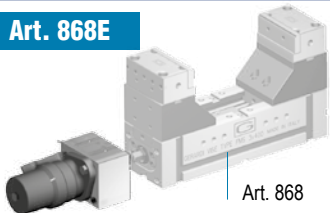
**Art. 868D**


(Art. 868 + 802) Morsa + moltiplicatore di coppia / Vise + torque multiplier

Cod.	5.86.8D120	5.86.8D130	5.86.8D230	5.86.8D240	5.86.8D250	5.86.8D260	5.86.8D340	5.86.8D350
------	------------	------------	------------	------------	------------	------------	------------	------------

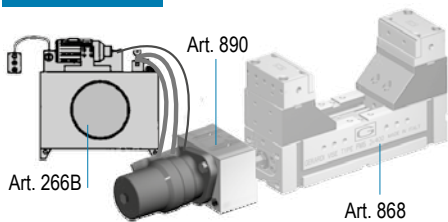
Moltiplicatore di coppia con rinvio angolare - Mechanical with torque multiplier with angular transmission

Cod.	5.80.21000	5.80.22000	5.80.23000
------	------------	------------	------------

**Art. 802**
**Art. 868E**


(Art. 868 + 890) Morsa + motore idraulico / Vise + hydraulic motor

Cod.	5.86.8E120	5.86.8E130	5.86.8E230	5.86.8E240	5.86.8E250	5.86.8E260	5.86.8E340	5.86.8E350
------	------------	------------	------------	------------	------------	------------	------------	------------

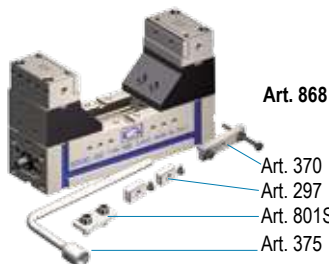
**Art. 868F**


(Art. 868 + 890 + 266B) Morsa + motore idraulico + centralina / Vise + hydraulic motor + power unit

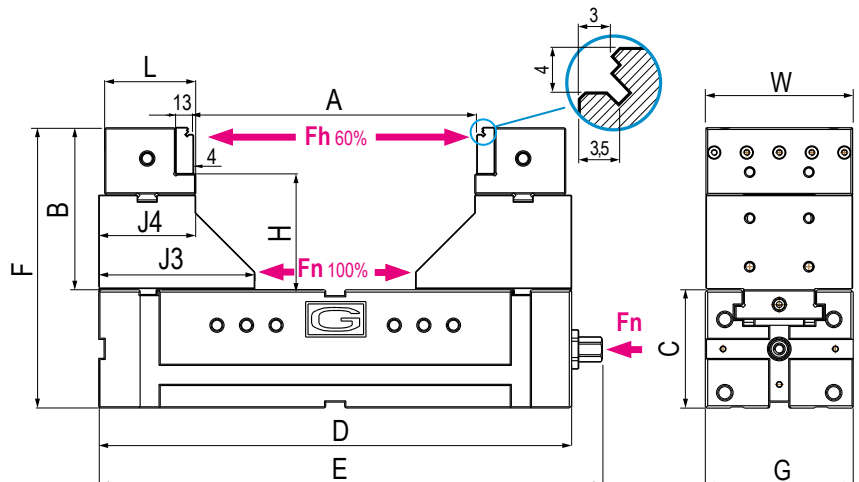
Cod.	5.86.8F120	5.86.8F130	5.86.8F230	5.86.8F240	5.86.8F250	5.86.8F260	5.86.8F340	5.86.8F350
------	------------	------------	------------	------------	------------	------------	------------	------------

**Dotazione standard:**

- 2 arresti laterali Art. 370
- 1 coppia di tasselli di posizionamento precisi Art. 297
- 1 chiave a pipa Art. 375
- 1 piastrina di collegamento Art. 801S


**Standard equipment:**

- 2 workstops Art. 370
- 1 pair of precision positioning key-nuts Art. 297
- 1 box wrench Art. 375
- 1 connecting plate Art. 801S



3 30 kN			4 30 kN				5 32 kN			6 32 kN		
444	544	644	316	416	516	616	396	496	596	596	696	796
	137			171				186			246	
	100			120				140			160	
600	700	800	500	600	700	800	600	700	800	800	900	1000
625	725	825	525	625	725	825	625	725	825	825	925	1025
	237			291				326			406	
	125			145				170			190	
	98			128				138			180	
	84			97				107			107	
	132			154				169			189	
	82			96				106			106	
	57			64				66			86	
	124			144				169			189	
	-			-				-			-	

5.86.83600 5.86.83700 5.86.83800 5.86.84500 5.86.84600 5.86.84700 5.86.84800 5.86.85600 5.86.85700 5.86.85800 5.86.86800 5.86.86900 5.86.86100

**Art. 868D**

(Art. 868 + 802) Morsa + moltiplicatore di coppia / Vise + torque multiplier

5.86.8D360 5.86.8D370 5.86.8D380 5.86.8D450 5.86.8D460 5.86.8D470 5.86.8D480 5.86.8D560 5.86.8D570 5.86.8D580 5.86.8D680 5.86.8D690 5.86.8D610

**Art. 802**

Moltiplicatore di coppia con rinvio angolare - Mechanical with torque multiplier with angular transmission

5.80.23000

5.80.24000

5.80.25000

5.80.26000

**Art. 868E**

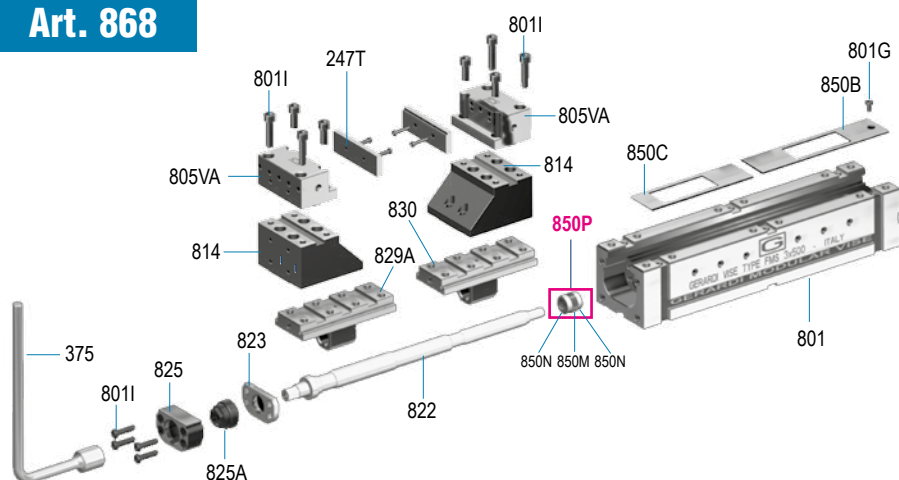
(Art. 868 + 890) Morsa + motore idraulico / Vise + hydraulic motor

5.86.8E360 5.86.8E370 5.86.8E380 5.86.8E450 5.86.8E460 5.86.8E470 5.86.8E480 5.86.8E560 5.86.8E570 5.86.8E580 5.86.8E680 5.86.8E690 5.86.8E610

**Art. 868F**

(Art. 868 + 890 + 266B) Morsa + motore idraulico + centralina / Vise + hydraulic motor + power unit

5.86.8F360 5.86.8F370 5.86.8F380 5.86.8F450 5.86.8F460 5.86.8F470 5.86.8F480 5.86.8F560 5.86.8F570 5.86.8F580 5.86.8F680 5.86.8F690 5.86.8F610

**Art. 868**


Art.	Pag.	Art.	Pag.
<b>375</b>	4.27	<b>850B</b>	5.54
<b>801</b>	5.40	<b>850C</b>	5.54
<b>801G</b>	5.54	<b>850M</b>	5.54
<b>801I</b>	5.54	<b>850N</b>	5.54
<b>810J</b>	5.51	<b>850P</b>	5.54
<b>822</b>	5.46	<b>814</b>	5.50
<b>823</b>	5.62	<b>805V</b>	5.29
<b>825</b>	5.62	<b>247T</b>	5.29
<b>825A</b>	5.54	-	-
<b>829A</b>	5.44	-	-
<b>830</b>	5.44	-	-

Tipo (grandezza) morsa / Vise (type) size

	1	2
kN		11 kN
A	-	6,4
B	-	25
C	-	80
D	-	106
E	-	49
G	-	10
H	-	90
L	-	20
W	-	74
kg	-	6,5
Cod.	-	7.67.0ID20

**Art. 670ID**
**NEW!**

 Morsa autocentrante **idraulica**  
 con ganasce mobili lavorabili

 Self-centering **idraulic** vise  
 with soft movable jaws

**AMPLIA LE TUE APPLICAZIONI TRAMITE GLI ACCESSORI MODULARI !**
**Art. 671A**

 Materiale non temprato  
 Not Hardened material

 Ganasce mobile lavorabile  
 Soft movable jaw

Cod.	-	7.67.1A200
------	---	------------

**Art. 671B**

 Materiale non temprato  
 Not Hardened material

 Ganasce mobile lavorabile ridotta  
 Soft narrow movable jaw

Cod.	-	7.67.1B200
------	---	------------

**Art. 671C**

 Materiale non temprato  
 Not Hardened material

 Ganasce mobile lavorabile predisposta  
 per piastre **ganasce standard ridotte**  
 Soft movable jaw for **narrow width standard jaw plates**

Cod.	-	7.67.1C200
------	---	------------

**Art. 243**

 Piastra ganasce piana rigata temprata  
 Hardened grooved straight jaw plate


Cod.	-	1.65.27000
------	---	------------

**Art. 245**

 Piastra ganasce piana liscia temprata  
 Hardened smooth straight jaw plate


Cod.	-	4.24.52000
------	---	------------

**Art. 247G**

 Piastra piana con inserti GRIP  
 Straight plate with GRIP inserts


Cod.	-	4.24.7G200
------	---	------------

**Dotazione standard:**

- 1 perno calibrato per centraggio Art.640P
- N°4 viti calibrate a colletto Art.83



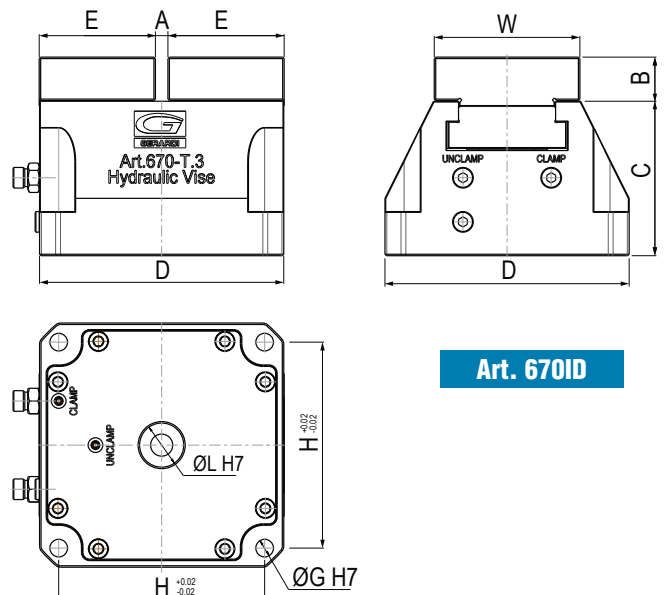
Art. 670

Art. 83

Art. 640P

**Standard equipment:**

- 1 calibrated centering pin Art.640P
- N. 4 shoulder screw Art. 83

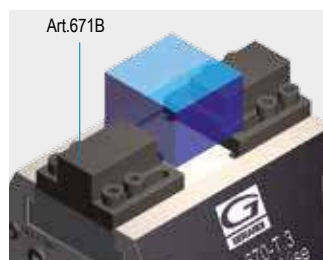
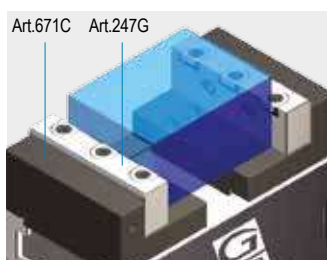
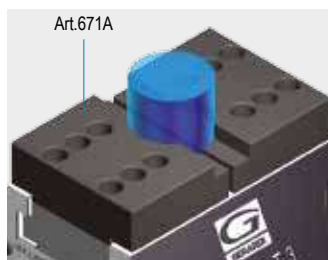

**Art. 670ID**



3 26 kN	4 46 kN	5
8,5	12	-
30	35	-
105	130	-
166	206	-
79	96	-
12	16	-
140	170	-
20	20	-
99	124	-
20	38	-
7.67.0ID30	7.67.0ID40	-

**UPGRADE YOUR VISE APPLICATIONS THROUGH MODULAR ACCESSORIES !**

7.67.1A300	7.67.1A400	-
7.67.1B300	7.67.1B400	-
7.67.1C300	7.67.1C400	-
1.65.37000	1.65.47000	-
4.24.53000	4.24.54000	-
4.24.7G300	4.24.7G400	-

**Art. 670ID**
**Esempi applicativi piastre ganasce:**  
**Jaw plates application examples:**


**Art. 670ID**

 Tipo / Type **1**
**NEW!**

- 1** GANASCIA  
JAW

---

- 2** CORPO BASE MORSA  
VISE BASE BODY

---

- 3** PISTONE  
PISTON

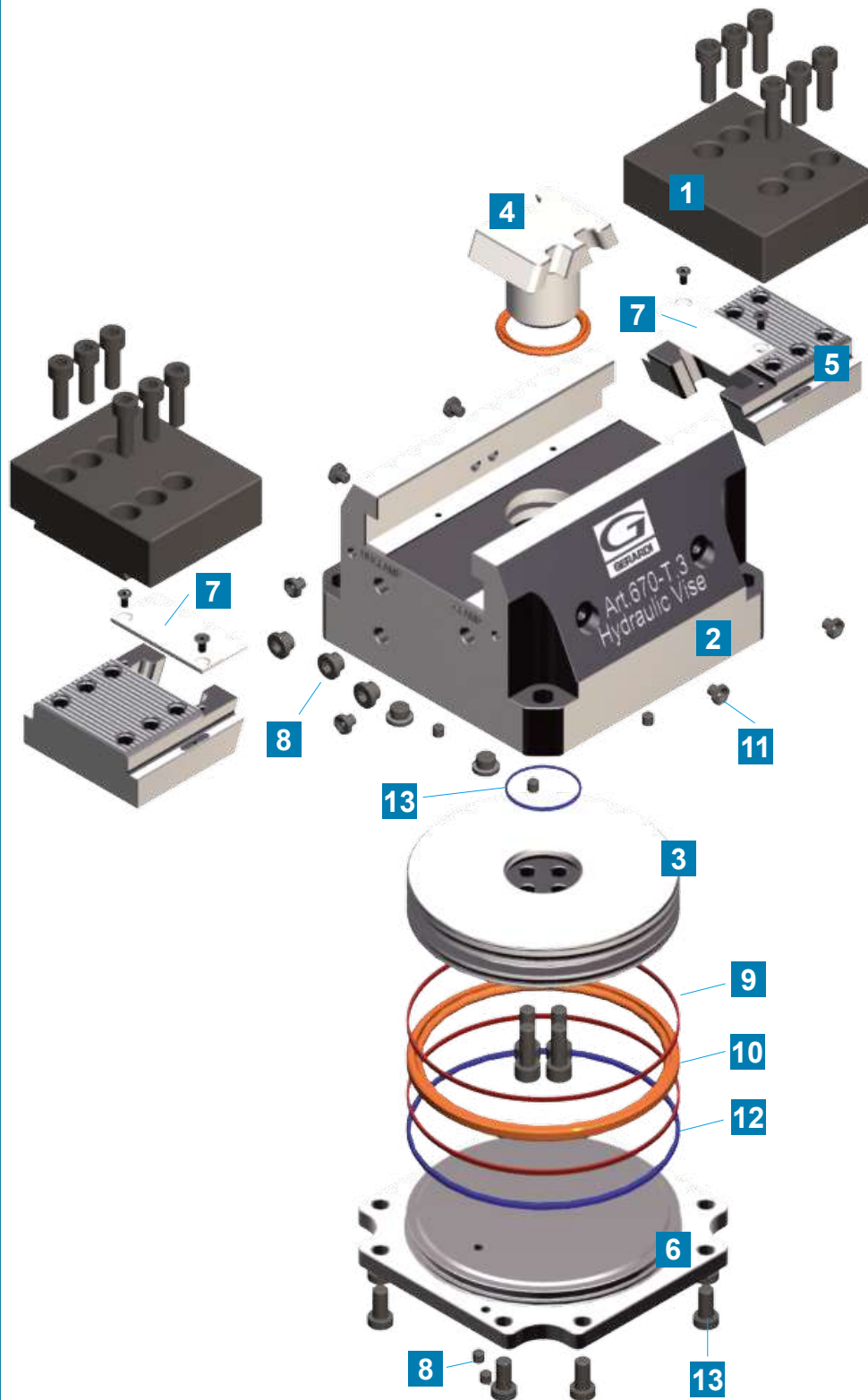
---

- 4** TIRANTE DI BLOCCAGGIO  
CLAMPING PULL-STUD

---

- 5** SLITTA GUIDATA  
GUIDED SLIDE

---

- 6** TAPPO DI CHIUSURA  
CLOSING PLUG

---

- 7** CARTER DI COPERTURA  
COVER PLATE

---

- 8** VITE DI TENUTA  
SEALING SCREW

---

- 9** ANELLO GUIDA  
SLIDE RING

---

- 10** GUARNIZIONE PISTONE  
PISTON SEAL

---

- 11** INGRASSATORE  
LUBRICATING NIPPLE

---

- 12** GUARNIZIONI OR  
OR SEAL

---

- 13** VITI DI SERRAGGIO  
CLAMPING SCREWS

# GANASCE & PIASTRE GANASCE PER MORSE MULTITASKING Art.670

## JAWS & JAW PLATES FOR MULTITASKING VISES Art.670

**NEW!**

Tipo (grandezza) / Type (size)	2	3	4
<b>Art. 671A</b> Ganascia mobile lavorabile Soft movable jaw  Materiale temprabile 20MnCr5 Hardenable material 20MnCr5			
W	74	99	124
B	25	30	35
E	49	79	96
Cod.	7.67.1A200	7.67.1A300	7.67.1A400

<b>Art. 671B</b> Ganascia mobile lavorabile ridotta Soft narrow movable jaw  Materiale temprabile 20MnCr5 Hardenable material 20MnCr5			
W	40	65	81
A	10	10	15
B	25	30	35
C	15	28	38
E	40	65	81
Cod.	7.67.1B200	7.67.1B300	7.67.1B400

<b>Art. 671C</b> Ganascia mobile lavorabile predisposta per piastre ganasce standard ridotte Soft movable jaw for narrow standard jaw plates  Materiale temprabile 20MnCr5 Hardenable material 20MnCr5			
W	74	94	124
A	13,5	18	18
B	38	48	58
E	45	70	87
F	30	51	62
Cod.	7.67.1C200	7.67.1C300	7.67.1C400

<b>Art. 243</b> Piastra ganascia piana rigata temprata Hardened grooved straight jaw plate			
W	74	94	124
G	12	12	13
Cod.	1.65.27000	1.65.37000	1.65.47000

<b>Art. 245</b> Piastra ganascia piana liscia temprata Hardened smooth straight jaw plate			
W	74	94	124
G	12	12	13
Cod.	4.24.52000	4.24.53000	4.24.54000

<b>Art. 247G</b> Piastra piana con inserti GRIP Straight plate with GRIP inserts			
W	74	94	124
G	12	12	13
Cod.	4.24.7G200	4.24.7G300	4.24.7G400

<b>Art. 83</b> Vite Calibrata a colletto Shoulder calibrated screw			
A	16	18	24
B	M8	M10	M12
C	10	12	16
D	15	15	18
E	7	8	11
X	30	40	45
Cod.	8.83.10300	8.83.12400	8.83.16450

<b>Art. 640P</b> Perno di centraggio Straight pin			
B	10 - 12 - 14 - 16 - 18 - 20 - 22 - 24 - 28 - 36		
Cod.	7.64.0P1000		

Specificare sempre quota B - Specify always B dimension

## SISTEMA A CODA DI RONDINE DOVE TAIL FIXTURES

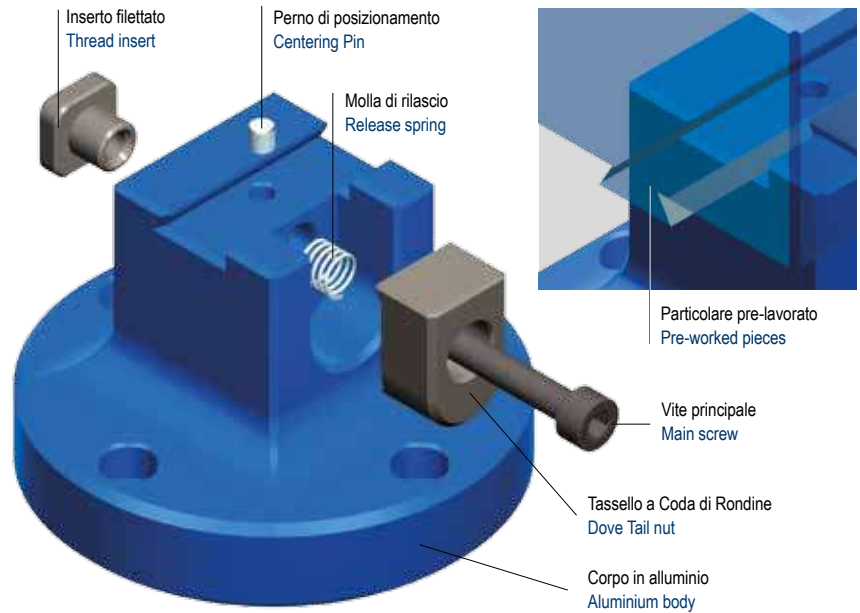
### Art. 690

Il sistema a Coda di Rondine è progettato specificamente per le lavorazioni su centri a 5 assi. Grazie alla sua versatilità e conformazione offre un'ottimizzazione dei tempi di attrezzaggio e di lavorazione dei particolari.

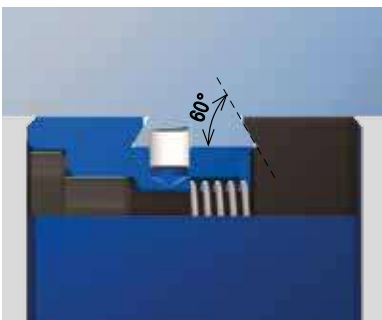
Il sistema Coda di Rondine è compatibile con l'ampia gamma di attrezzature Gerardi ed è possibile applicarlo sui più conosciuti centri di lavoro al mondo.

The Dove Tail System is designed specifically for machining on 5 Axis machine centers.

Thanks to its versatility and shape it guarantees the best set up and machining times. The Dove Tail System is obviously compatible with the widest range of Gerardi fixtures and it is possible to use it on the worldwide most popular Machine Centers.



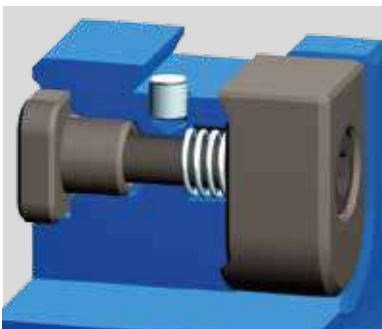
## COME SERRARE UN PARTICOLARE CON IL SISTEMA A CODA DI RONDINE HOW TO CLAMP WORKPIECES WITH DOVE TAIL FIXTURE



### 1 PREDISPOSIZIONE CODA DI RONDINE DOVE TAIL SET-UP

Ogni particolare può essere serrato tramite il sistema Coda di Rondine pre-lavorando la faccia inferiore mediante l'apposita fresa, creando una sagoma dell'altezza di 3mm e un angolo di 60°.

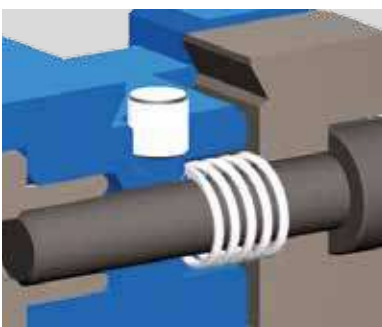
Each workpiece can be clamped on the Dove Tail system machining firstly the lower face through the proper milling cutter in order to create a 3mm height shape with a 60° angle.



### 2 PERNO DI POSIZIONAMENTO CENTERING PIN

Il perno di posizionamento del sistema Coda di Rondine ha la funzione di assicurare sempre un rapido e perfetto centraggio del particolare da lavorare garantendo la massima ripetibilità.

The positioning pin of the Dove Tail System is for ensuring always a quickest and perfect workpiece centering which will then guarantee the max repeatability.



### 3 SERRAGGIO & RILASCIO GRADUALE CLAMPING & GRADUAL RELEASE

Il particolare da lavorare viene serrato mediante il tassello a Coda di Rondine, che sfruttando l'effetto leva generato dalla vite principale assicura un'efficace chiusura. La molla all'interno permette un rilascio graduale del tassello di bloccaggio.

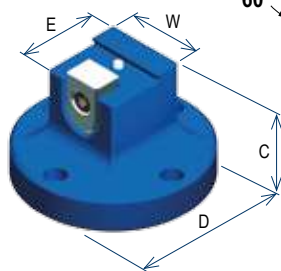
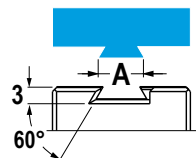
The workpiece is clamped through the Dove Tail System which exploiting the leverage created by the main screw ensures a perfect clamping. The internal spring allows a gradual release of the clamping nut.

# SISTEMA A CODA DI RONDINE in ALLUMINIO

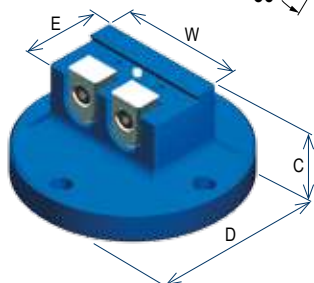
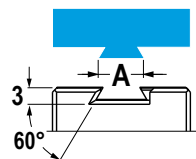
## ALUMINIUM DOVE TAIL FIXTURES

**NEW!**

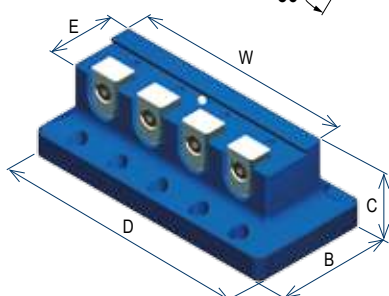
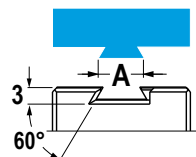
Tipo (grandezza) - (type) size		1	2	3	4	5	6
Grandezza coda di rondine - Dove tail dimension (inch)	A"	0,281"	0,375"	0,5"	0,75"	1,5"	2,25"
Grandezza coda di rondine - Dove tail dimension	A	7,14	9,53	12,7	19,5	38,1	57,15
<b>Art.690</b>							
<b>SINGOLO - SINGLE</b>							
Tipo / Type 3							
	C	50	50	50	50	70	70
	D	Ø56	Ø56	Ø76	Ø86	Ø116	88x132
	E	20	22	34	40	70	88
	W	20	22	34	40	50	48
	Forma Shape	○	○	○	○	○	□
	kg	0,3	0,4	0,9	1,1	3,2	3,6
	Cod.	12.690.101	12.690.201	12.690.301	12.690.401	12.690.501	12.690.601



Tipo (grandezza) - (type) size		1	2	3	4	5	6
Grandezza coda di rondine - Dove tail dimension (inch)	A"	0,281"	0,375"	0,5"	0,75"	1,5"	2,25"
Grandezza coda di rondine - Dove tail dimension	A	7,14	9,53	12,7	19,5	38,1	57,15
<b>Art.690</b>							
<b>DOPIO - DOUBLE</b>							
Tipo / Type 3							
	C	-	-	50	50	70	70
	D	-	-	Ø98	Ø104	110	110x128
	E	-	-	34	40	70	88
	W	-	-	60	60	90	90
	Forma Shape	-	-	○	○	□	□
	kg	-	-	1,4	1,6	4,4	5,3
	Cod.	-	-	12.690.302	12.690.402	12.690.502	12.690.602



Tipo (grandezza) - (type) size		1	2	3	4	5	6
Grandezza coda di rondine - Dove tail dimension (inch)	A"	0,281"	0,375"	0,5"	0,75"	1,5"	2,25"
Grandezza coda di rondine - Dove tail dimension	A	7,14	9,53	12,7	19,5	38,1	57,15
<b>Art.690</b>							
<b>MULTIPLIO - MULTIPLE</b>							
Tipo / Type 3							
	B	-	-	64	70	110	128
	C	-	-	50	50	70	70
	D	-	-	140	140	190	190
	E	-	-	34	40	70	88
	W	-	-	120	120	170	170
	Forma Shape	-	-	□	□	□	□
	kg	-	-	2,1	2,4	7,9	9,6
	Cod.	-	-	12.690.304	12.690.404	12.690.504	12.690.604



# DIAGRAMMI CON FORZE DI SERRAGGIO Art.640

## DIAGRAMS WITH CLAMPING FORCE Art.640

### GRUPPI DI SERRAGGIO MECCANICI

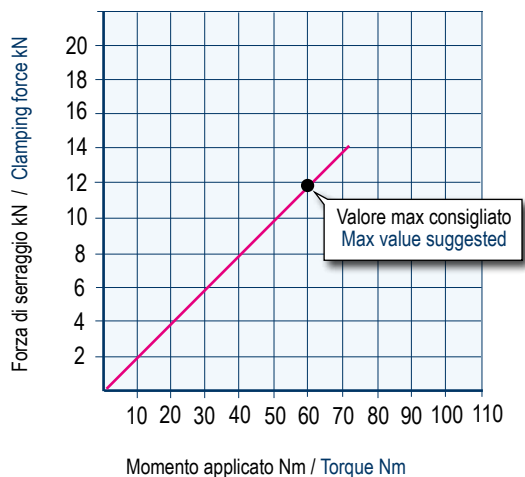
I diagrammi seguenti consentono di determinare le forze di serraggio ottenibili con le morse di varia grandezza (da 1 a 3), in funzione della forza applicata

### MECHANICAL CLAMPING DEVICES

The following diagrams give the clamping force that can be obtained with each vise type (size 1 to 3) as a function of wrenching force

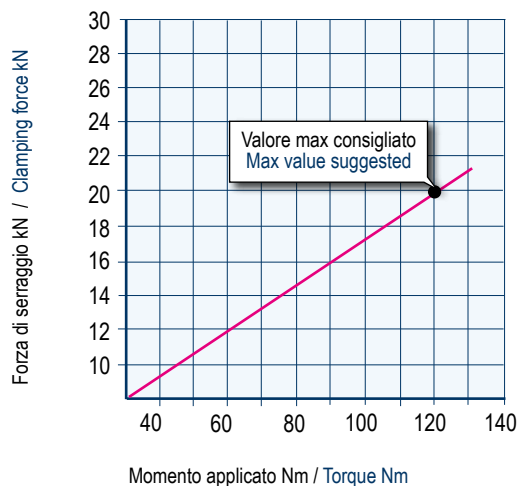
## MORSE MULTITASKING TIPO 1 MULTITASKING VISES TYPE 1

Vite TPF18 - Passo 2mm  
Screw TPF18 - Pitch 2mm



## MORSE MULTITASKING TIPO 2 MULTITASKING VISES TYPE 2

Vite TPF24 - Passo 2mm  
Screw TPF24 - Pitch 2mm



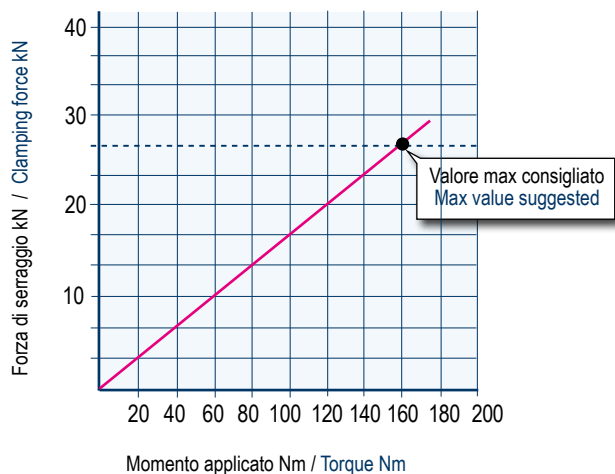
**Art. 640**

Tipo / Type 1 e 2



## MORSE MULTITASKING TIPO 3 MULTITASKING VISES TYPE 3

Vite TPF24 - Passo 2mm  
Screw TPF24 - Pitch 2mm



**Art. 640**

Tipo / Type 3

NB: Alcuni fattori, come la lubrificazione, lo staffaggio, gli attriti ed altro, possono modificare i valori indicati fino a  $\pm 10\%$ . Per un corretto utilizzo non superare i valori indicati nel grafico

Some factor as lubrication, clamping on the machine table, frictions and more can modify above values within a  $\pm 10\%$  range. For optimum operation do not exceed chart values.

# DIAGRAMMI CON FORZE DI SERRAGGIO Art.650 - Art.950 DIAGRAMS WITH CLAMPING FORCE Art.650 - Art.950

**COMPACT GRIP**  
**NEW!**

## GRUPPI DI SERRAGGIO MECCANICI

I diagrammi seguenti consentono di determinare le forze di serraggio ottenibili con le morse di varia grandezza (da 1 a 3), in funzione della forza applicata

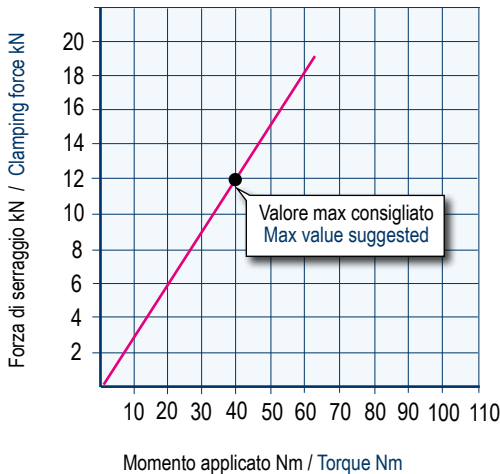
## MECHANICAL CLAMPING DEVICES

The following diagrams give the clamping force that can be obtained with each vise type (size 1 to 3) as a function of wrenching force

### MORSE COMPACT GRIP TIPO 1 COMPACT GRIP VISES TYPE 1

Vite TPF14 - Passo 2mm  
Screw TPF14 - Pitch 2mm

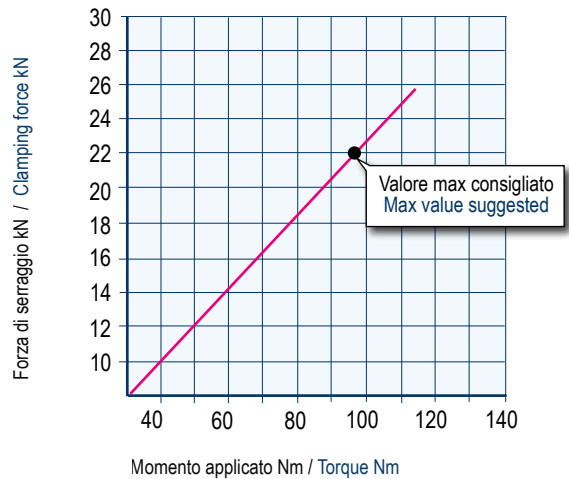
**NEW!**



### MORSE COMPACT GRIP TIPO 2 COMPACT GRIP VISES TYPE 2

Vite TPF18 - Passo 2mm  
Screw TPF18 - Pitch 2mm

**NEW!**



**Art. 650**

Tipo / Type 1



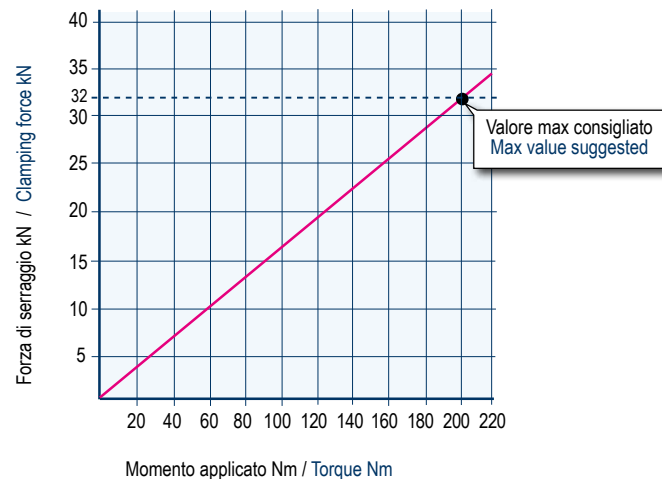
Tipo / Type 2



### MORSE COMPACT GRIP TIPO 3 COMPACT GRIP VISES TYPE 3

Vite TPF24 - Passo 2mm  
Screw TPF24 - Pitch 2mm

**NEW!**



**Art. 650**

Tipo / Type 3

NB: Alcuni fattori, come la lubrificazione, lo staffaggio, gli attriti ed altro, possono modificare i valori indicati fino a ± 10%.  
Per un corretto utilizzo non superare i valori indicati nel grafico

Some factor as lubrication, clamping on the machine table, frictions and more can modify above values within a ± 10% range.  
For optimum operation do not exceed chart values.

# DIAGRAMMI CON FORZE DI SERRAGGIO Art.670 DIAGRAMS WITH CLAMPING FORCE Art.670

## SERRAGGIO IDRAULICO

I diagrammi seguenti consentono di determinare le forze di serraggio ottenibili con le morse di varia grandezza ( da 1 a 6 ), provvisti di vari dispositivi di bloccaggio idraulici, in funzione della pressione dei fluidi (aria e olio)

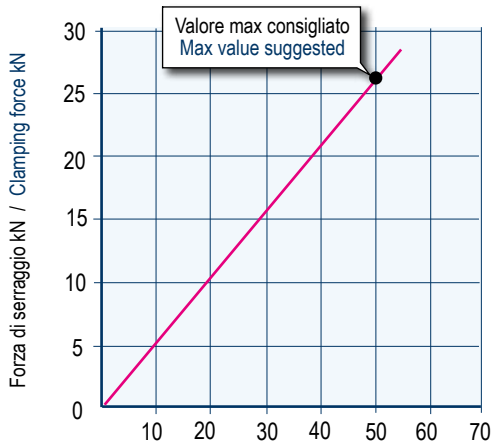
## HYDRAULIC CLAMPING

The following diagrams give the clamping force that can be obtained with each vise type (size 1 to 6) when equipped with hydraulic blocking devices, as a function of the fluid pressure (air or oil)

### MORSE AUTOCENTRANTE IDRAULICA TIPO 2 HYDRAULIC SELF/CENTERING VISE TYPE 2

Cilindro idraulico Ø85mm - Superficie efficace 51,8mm<sup>2</sup>  
Hydraulic cylinder Ø85mm - Effective surface 51,8mm<sup>2</sup>

**NEW!**

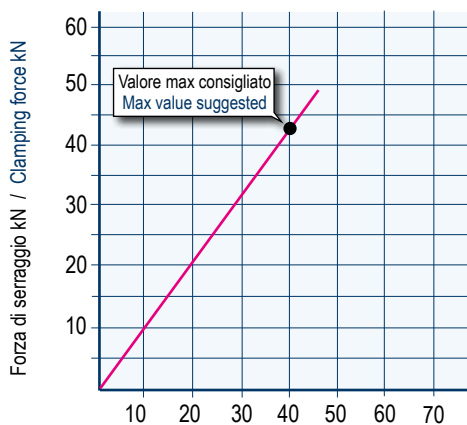


Pressione uscita olio - bar / Oil outlet pressure - bar  
**(1 bar = 14,5 psi)**

### MORSE AUTOCENTRANTE IDRAULICA TIPO 3 HYDRAULIC SELF/CENTERING VISE TYPE 3

Cilindro idraulico Ø135mm - Superficie efficace 132,3mm<sup>2</sup>  
Hydraulic cylinder Ø135mm - Effective surface 132,3mm<sup>2</sup>

**NEW!**



Pressione uscita olio - bar / Oil outlet pressure - bar  
**(1 bar = 14,5 psi)**

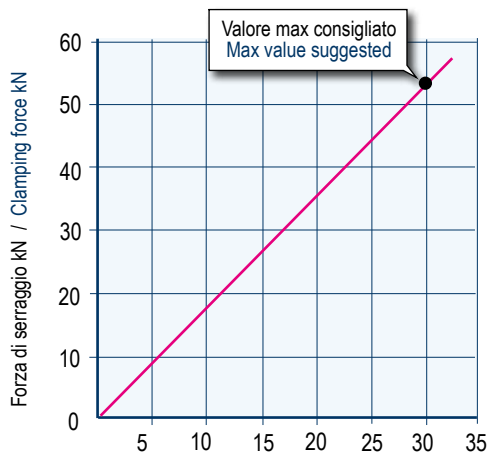


**Art. 670ID**

### MORSE AUTOCENTRANTE IDRAULICA TIPO 4 HYDRAULIC SELF/CENTERING VISE TYPE 4

Cilindro idraulico Ø170mm - Superficie efficace 209,5mm<sup>2</sup>  
Hydraulic cylinder Ø170mm - Effective surface 209,5mm<sup>2</sup>

**NEW!**



Pressione uscita olio - bar / Oil outlet pressure - bar  
**(1 bar = 14,5 psi)**

NB: Alcuni fattori, come la lubrificazione, lo staffaggio, gli attriti ed altro, possono modificare i valori indicati fino a ± 10%. Per un corretto utilizzo non superare i valori indicati nel grafico

Some factor as lubrication, clamping on the machine table, frictions and more can modify above values within a ± 10% range. For optimum operation do not exceed chart values.